



**Universal small format loud-speaker for high quality music and speech reproduction. Well suited for applications in Pubs, Bistros and Cafes, and as a universal near field system. 3 x M10 mounting points provide for easy installation. The A 1 is also available in the TR-version with 100 V transformer.**

## PRODUCT SPECIFICATIONS

<b>Speaker Components</b>	6,5" Nd / 1,1"
<b>Description</b>	Multi Media Sound System
<b>Power</b> AES / Peak	200 W / 600 W
<b>Impedance</b> nominal	8 Ω ( 16 Ω optional)
<b>SPL</b> 1 W / Peak @ 1 m	93 dB / 121 dB
<b>Usable Range</b>	75 Hz - 19 kHz (-10 dB)
<b>Tuning Frequency</b> excursion minimum	91 Hz
<b>X - Overpoint</b> acoustical	2,3 kHz
<b>Coverage</b> horizontal / vertical	90° - conical
<b>Max. Splay Angle</b>	- - -
<b>Connectors</b>	2 x Neutrik Speakon NL4MP in/out Coding: 1 +/- HiMid, 2 +/- loop thru
<b>Handles</b>	- - -
<b>Rigging / Fittings</b>	3 x M10
<b>Weight</b>	5,5 kg
<b>Size</b> height x width x depth	33,9 x 20,4 x 20,4 cm
<b>Order No.</b>	<b>00210/II</b> <b>00210/TR/II</b> (with 100 V transformer)



A total of three M10 flying points can be utilised for mounting the extensive accessories.

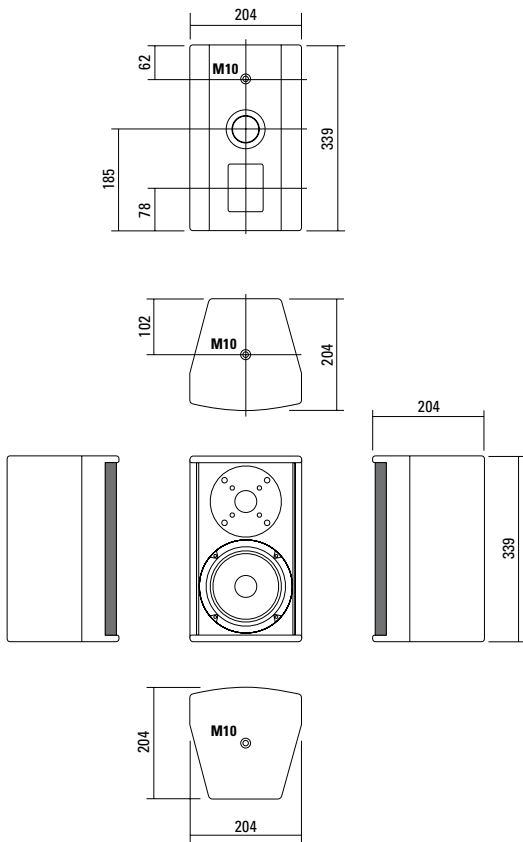


A deeper low end response can be achieved by changing the rear-mounted bass reflex tunnel.



Connection Panel.

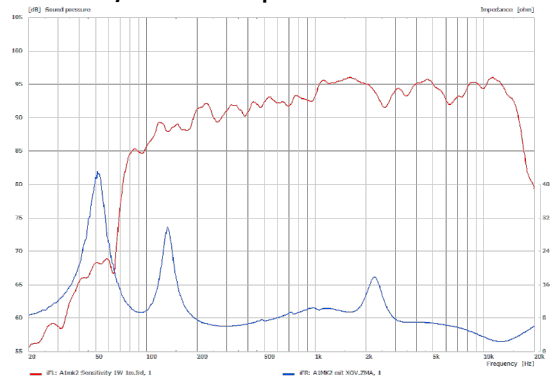
## DIMENSIONS



### Controller Setups:

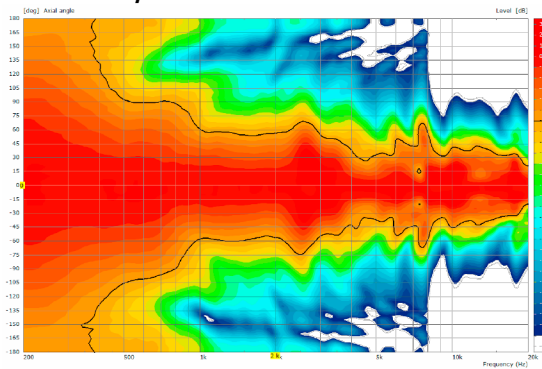
<https://www.seeburg.com/en/downloads>

### Sensitivity 1 W @ 1 m + Impedance

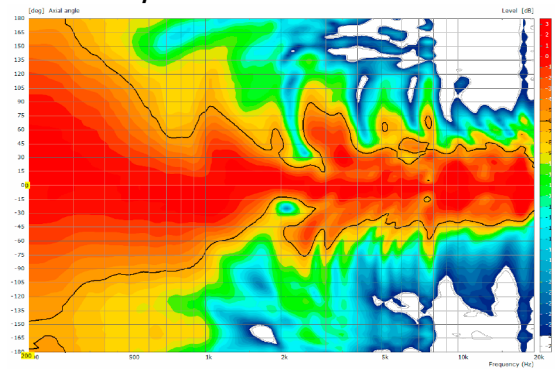


## COVERAGE PATTERNS

### 2D Directivity Plot - horizontal



### 2D Directivity Plot - vertical



**Flying Bracket**



for A 1 / TS Nano,  
horizontal alignment,  
incl. (2 x M10 x 20 socket head  
screws, 2 x 40 mm rubber washers)  
Order No. **01210/H/set/w** (RAL 9010)  
Order No. **01210/H/set**

**Flying J-Bracket**



for A 1 / GL 8 / X 1 / X 2 / TS Nano,  
horizontal and vertical alignment,  
incl. (white version: 1 x M10 x 20  
socket head screws, black version:  
1 x M10 x 20 adjustable handle  
screw)  
Order No. **01212/J/set/w** (RAL 9010)  
Order No. **01212/J/set**

**Handle Screw**



for flying brackets, adjustable  
M10 x 20  
Order No. **08375/20**

**Rubber Washer**



for flying brackets,  
5 mm x 40 mm Ø  
Order No. **01206**

**Flange**



35 mm ø → M10 x 16 mm,  
M8 x 20 star knob screw  
Order No. **08126**

**Flange**



with ball and socket joint,  
with additional locking screw,  
M10 x 15, max. load 15 kg  
Order No. **08125**

**Truss Clamp**



incl. M10 Adapter,  
max. load 15 kg  
Order No. **01221**

**Doughty Quick Trigger Clamp**



max. load 250 kg  
Order No. **01223**

**Steel Safety**



4 mm x 600 mm, black,  
max. load 10 kg (BGI 810-3),  
quick connector undetachably  
Order No. **01376/4**

**Chain Fastener**



VBS 7 mm  
Order No. **01378**

**Ring Screw**



M10– DIN 580  
Order No. **73700** (zincd)  
Order No. **73700/sw** (black zincd)

**TV Spigot**



10 mm internal thread,  
28 mm Ø  
Order No. **08128**



Flying J-Bracket

## ACCESSORIES A 1

### Wall Mount



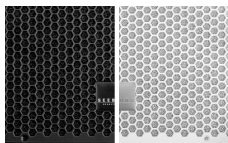
ball and socket joint flange (08125)  
+ 08125/plate  
Order No. **08125/set**

### Wall Mount



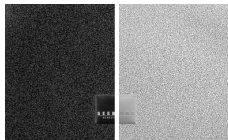
M10, max. load 15 kg,  
for permanent installation,  
incl. tilt angle stop  
Order No. **08131/F**  
Order No. **08131/F/w** (RAL 9010)

### Honeycomb Grilles



for A 1 front replacement.

Foam behind grille  
Order No. **97002/hex/compl**  
Order No. **97002/hex/compl/w**  
(RAL 9010)



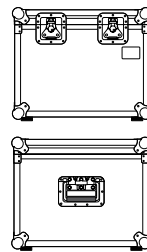
Foam in front of grille  
Order No. **97002/compl**  
Order No. **97002/compl/w**  
(RAL 9010)

### Bag



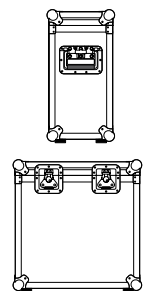
for 2 x A 1 / 2 x TS Nano, padded  
with pocket for accessories  
Order No. **01249**

### Flight Case Trunk



for 4 pcs. TS Nano / A 1,  
with flying bracket, standard, 7 mm  
birch multiplex, PVC coated, 2 x  
recessed sprung handles, 2 x butterfly  
catches, rubber feet, partition walls,  
interior lined with felt.  
Order No. **16005**

### Flight Case Trunk



for 2 pcs. TS Nano / A 1,  
with flying bracket and flange,  
standard, 7 mm birch multiplex, PVC  
coated, 2 x recessed sprung handles,  
2 x butterfly catches, rubber feet,  
partition walls, interior lined with felt.  
Order No. **16006**

