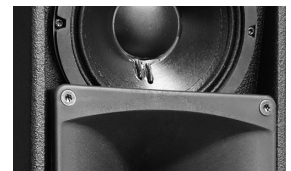
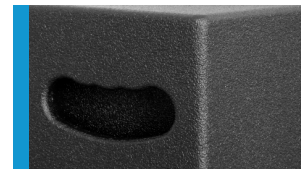




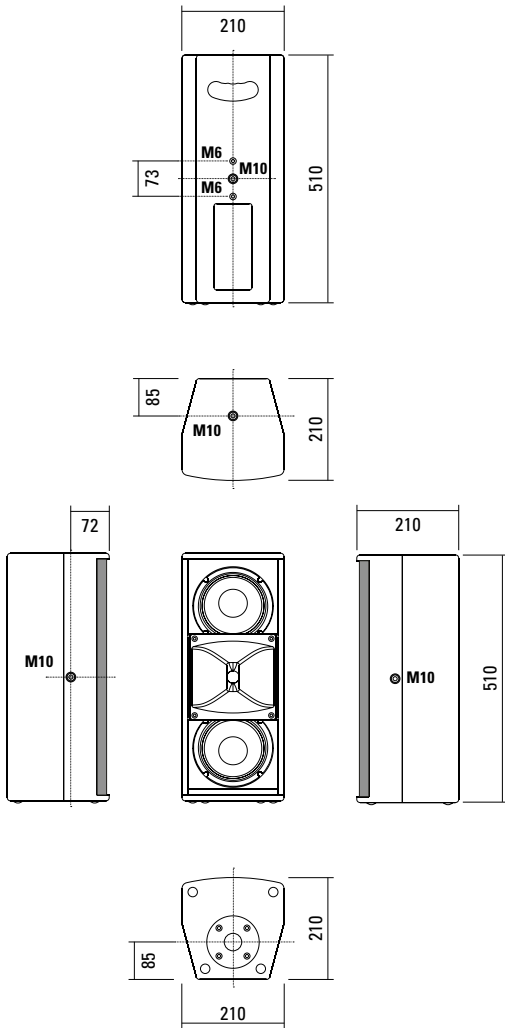
An unobtrusively elegant and yet powerful system for installations and corporate presentations. The revised 2 x 6.5" / 1" configuration with larger horn provides improved coverage and speech intelligibility and longer throw. Four M10 mounting points, combined with our range of mounting accessories, allow fast and simple horizontal or vertical installation. The option is available for a fifth M10 mounting point in place of the standard loudspeaker stand socket. The integrated digital amplifier technology provides 500 / 150 Watt AES and DSP control. A range of factory-configured presets and volume settings can be selected.

## PRODUCT SPECIFICATIONS

<b>Speaker Components</b>	2 x 6,5" Nd (2" VC) / 1" (1,7" VC)
<b>Description</b>	HiMid Sound System
<b>Amp Power</b>	LF: 500 W AES / 110-230 V HF: 150 W AES / 110-230 V
<b>Rated Current</b>	0,5 A @ 230 V
<b>SPL</b> <small>Peak @ 1 m</small>	128 dB
<b>Max. Input Signal</b>	25 dBu
<b>DSP</b>	HDLM FPGA Processing 32 bit floating point
<b>AD / DA</b>	24 bit / 96 kHz
<b>Latency</b>	0,8 ms (analog in to analog out)
<b>Usable Range</b>	80 Hz - 19 kHz (-6 dB)
<b>Tuning Frequency</b> <small>excursion minimum</small>	95 Hz
<b>X - Overpoint</b> <small>acoustical</small>	Depends on preset
<b>Coverage</b> <small>horizontal / vertical</small>	90° x 60° - rotatable
<b>Connectors</b>	Neutrik XLR in/out Neutrik PowerCon in/out
<b>Handles</b>	1 x
<b>Rigging / Fittings</b>	4 x M10, 2 x M6 35 mm pole mount
<b>Weight</b>	10,5 kg
<b>Size</b> <small>height x width x depth</small>	51,0 x 21,0 x 21,0 cm
<b>Order No.</b>	<b>00230/dp</b>



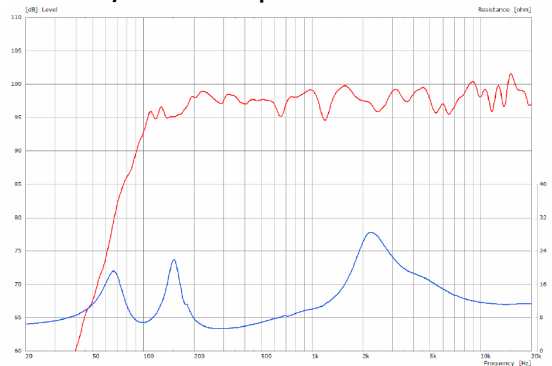
## DIMENSIONS



### Controller Setups:

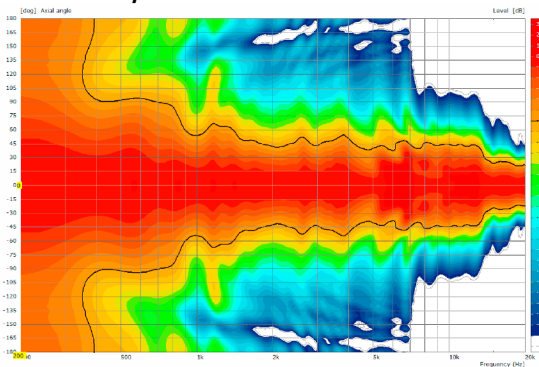
<https://www.seeburg.com/en/downloads>

### Sensitivity 1 W @ 1 m + Impedance

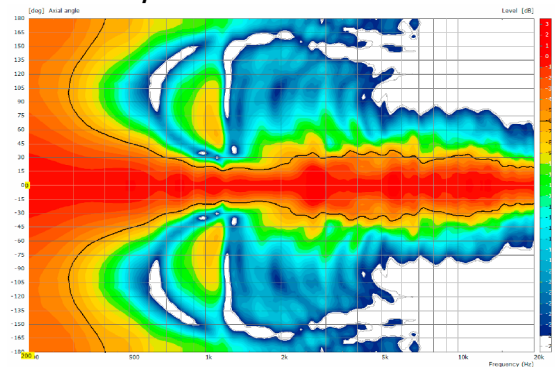


## COVERAGE PATTERNS

### 2D Directivity Plot - horizontal



### 2D Directivity Plot - vertical



The A 2 dp features integrated digital amplifier electronics with a DSP controller. Various factory-configured presets and volume settings can be selected.

High-grade electronic components from the industrial sector and a first-class circuit design ensure excellent

audio quality with low distortion and a minimal noise floor. Highly efficient and "intelligent" limiter systems ensure optimum protection against overload, without restricting the possibilities offered by this high-performance sound system.

**Level**

Adjustment in 3 dB steps (-12 dB to +6 dB).

**Status**

**Mute LED**

Red light when the system is muted or under technically critical conditions.

**Limit LED**

Yellow light when the limiter is restricting the level.

**Signal LED**

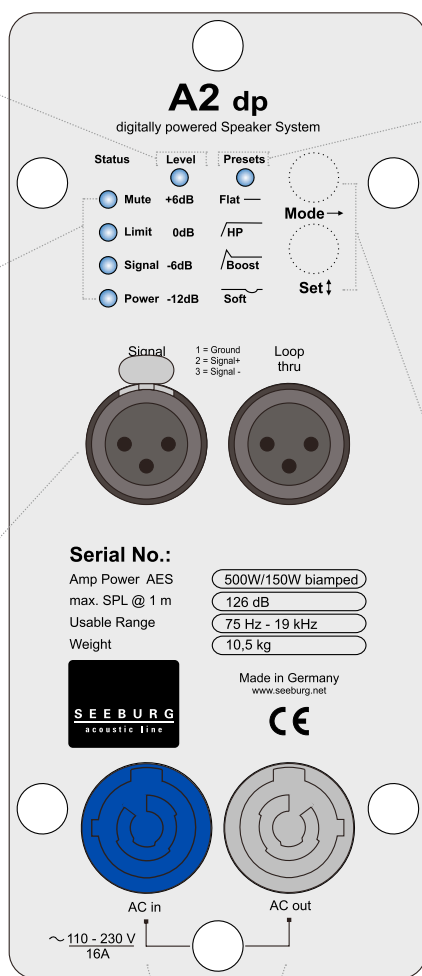
Green light when the input signal exceeds -20 dBu

**Power LED**

Green light when the system is switched on.

**XLR**

Symmetrical analog input max. Input +25 dBu. Effective filter protection against HF interference and DC Voltages. Electronically balanced to prevent noise.



**Presets**

**Flat**

This setting provides a linear frequency response with a neutral sound characteristics. Standard setting for many applications.

**HP**

Switches in a high pass filter for use in combination with a subwoofer.

**Boost**

The same neutral response as the „Flat“ setting, but with the addition of a bass boost.

**Soft**

Reduces the level in the frequency range from 2.5 - 5 kHz, to which the ear is particularly sensitive. This setting is recommended for high level reproduction of highly compressed music tracks.

**Mode - key**

Switches between control modes Status, Level and Presets.

**Set - key**

Setting of various values and Mute on / off.

**PowerCon (blue)**

Power supply  
~110-230 V / 16 A max.

**PowerCon (grey)**

~110-230 V / 16 A max.  
loop through connector

**Flying Bracket**



for A 2,  
horizontal alignment,  
incl. (2 x M10 x 20 socket head  
screws, 2 x rubber washers, 1 x plate)

Order No. **01214/H/set/w** (RAL 9010)  
Order No. **01214/H/set**

**Flying Bracket**



for A 2,  
incl. (black version: 2 x M10 x 20  
knurled screws, 2 x rubber washers  
white version: 2 x M10 x 20 socket  
head screws, 2 x rubber washers)

Order No. **01214/set/w** (RAL 9010)  
Order No. **01214/set**

**Knurled Screw**



M10 x 20 mm  
Order No. **73750/w** (RAL 9010)  
Order No. **73750**

**Rubber Washer**



for flying brackets,  
5 mm x 40 mm Ø  
Order No. **01206**

**Plate**



for A 2 / A 3 flying brackets,  
horizontal alignment,  
replacement for pole mount flange,  
110 mm Ø flange with M10 nut  
Order No. **08119/M10/w** (RAL 9010)  
Order No. **08119/M10**

**Flange**



35 mm ø → M10 x 16 mm,  
M8 x 20 star knob screw  
Order No. **08126**

**Flange**



with ball and socket joint,  
with additional locking screw,  
M10 x 15, max. load 15 kg

Order No. **08125**

**Truss Clamp**



incl. M10 Adapter,  
max. load 15 kg  
Order No. **01221**

**Doughty Quick Trigger Clamp**



max. load 100 kg  
Order No. **01223/100 kg**

**Steel Safety**



4 mm x 600 mm, black,  
max. load 10 kg (BGI 810-3),  
quick connector undetachably

Order No. **01376/4**

**Ring Screw**



M10– DIN 580  
Order No. **73700** (zincd)  
Order No. **73700/sw** (black zincd)

**TV Spigot**



10 mm internal thread,  
28 mm Ø

Order No. **08128**



Flying Bracket

## ACCESSORIES A 2 dp

### Wall Mount



ball and socket joint flange (08125)  
+ 08125/plate  
Order No. **08125/set**

### Wall Mount



for U-brackets, max. load 40 kg,  
incl. (M10 x 70 mm socket head screw,  
M10 hex lock nut and flat washer)  
for 8"-12" speakers  
Order No. **08130/F/269/w** (RAL 9010)  
Order No. **08130/F/269**

### Wall Mount



M10, max. load 15 kg,  
for permanent installation,  
incl. tilt angle stop  
Order No. **08131/F**  
Order No. **08131/F/w** (RAL 9010)

### Wall Mount



2 x M6 fixing holes (d=73 mm),  
1 x M10 fixing hole (center),  
max. load 25 kg  
Order No. **03034**

### Spacer



for Wall Mount (03034)  
polyurea coated  
Order No. **03034/spc**

### Cover



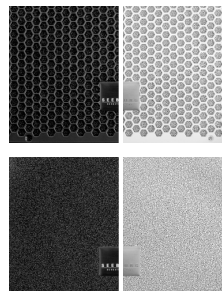
for A 2, padded  
Order No. **01243**

### Rain Cover



for A 2,  
with zipper  
Order No. **01243/outdoor**

### Honeycomb Grilles



for A 2 front replacement.  
Foam behind grille  
Order No. **97004/hex/compl**  
Order No. **97004/hex/compl/w**  
(RAL 9010)  
Foam in front of grille  
Order No. **97004/compl**  
Order No. **97004/compl/w**  
(RAL 9010)

### Hybrid Cable System



PowerCon-PowerCon / XLR-XLR  
2,5 m Order No. **08462**  
5 m Order No. **08464**  
10 m Order No. **08466**  
15 m Order No. **08468**



Spacer -> Wall Mount