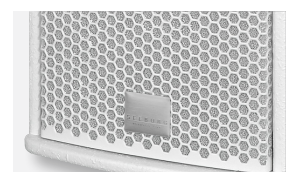
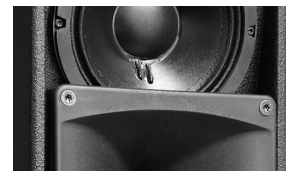
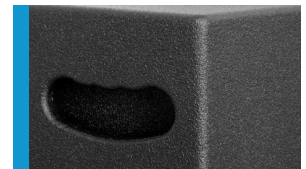




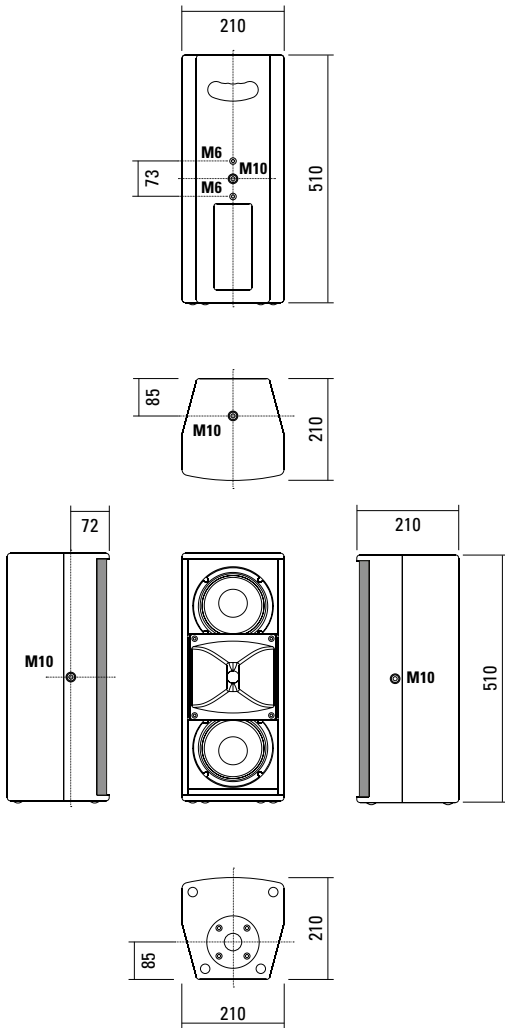
An unobtrusively elegant and yet powerful system for installations and corporate presentations. The revised 2 x 6.5" / 1" configuration with larger horn provides improved coverage and speech intelligibility and longer throw. Four M10 mounting points, combined with our range of mounting accessories, allow fast and simple horizontal or vertical installation. The option is available for a fifth M10 mounting point in place of the standard loudspeaker stand socket.

PRODUCT SPECIFICATIONS

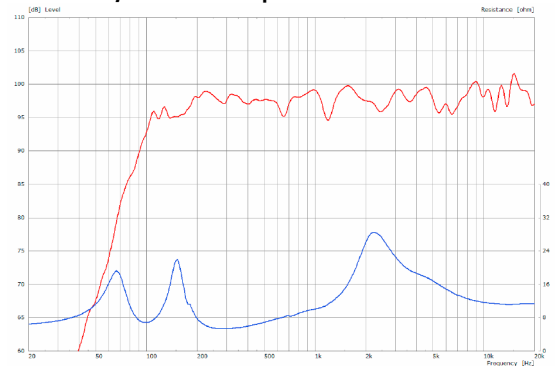
Speaker Components	2 x 6,5" Nd (2" VC) / 1" (1,7" VC)
Description	HiMid Sound System
Power AES / Peak	400 W / 1200 W
Impedance nominal	8 Ω
SPL 1 W / Peak @ 1 m	97 dB / 128 dB
Usable Range	80 Hz - 19 kHz
Tuning Frequency excursion minimum	95 Hz
X - Overpoint acoustical	1,5 kHz
Coverage horizontal / vertical	90° x 60° - rotatable
Max. Splay Angle	- - -
Connectors	2 x Neutrik Speakon NL4MP in/out Coding: 1 +/- HiMid, 2 +/- loop thru
Handles	1 x
Rigging / Fittings	4 x M10, 2 x M6 35 mm pole mount
Weight	9,5 kg
Size height x width x depth	51,0 x 21,0 x 21,0 cm
Order No.	00230/III



DIMENSIONS

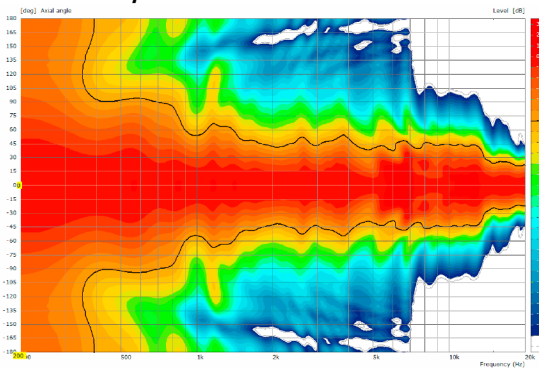


Sensitivity 1 W @ 1 m + Impedance

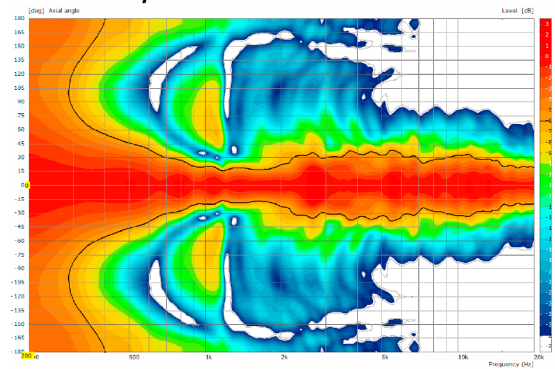


COVERAGE PATTERNS

2D Directivity Plot - horizontal



2D Directivity Plot - vertical



Flying Bracket



for A 2,
horizontal alignment,
incl. (2 x M10 x 20 socket head
screws, 2 x rubber washers, 1 x plate)

Order No. **01214/H/set/w** (RAL 9010)
Order No. **01214/H/set**

Flying Bracket



for A 2,
incl. (black version: 2 x M10 x 20
knurled screws, 2 x rubber washers
white version: 2 x M10 x 20 socket
head screws, 2 x rubber washers)

Order No. **01214/set/w** (RAL 9010)
Order No. **01214/set**

Knurled Screw



M10 x 20 mm
Order No. **73750/w** (RAL 9010)
Order No. **73750**

Rubber Washer



for flying brackets,
5 mm x 40 mm Ø
Order No. **01206**

Plate



for A 2 / A 3 flying brackets,
horizontal alignment,
replacement for pole mount flange,
110 mm Ø flange with M10 nut
Order No. **08119/M10/w** (RAL 9010)
Order No. **08119/M10**

Flange



35 mm ø → M10 x 16 mm,
M8 x 20 star knob screw
Order No. **08126**

Flange



with ball and socket joint,
with additional locking screw,
M10 x 15, max. load 15 kg

Order No. **08125**

Truss Clamp



incl. M10 Adapter,
max. load 15 kg

Order No. **01221**

Doughty Quick Trigger Clamp



max. load 100 kg

Order No. **01223/100 kg**

Steel Safety



4 mm x 600 mm, black,
max. load 10 kg (BGI 810-3),
quick connector undetachably

Order No. **01376/4**

Ring Screw



M10– DIN 580
Order No. **73700** (zincd)
Order No. **73700/sw** (black zincd)

TV Spigot



10 mm internal thread,
28 mm Ø

Order No. **08128**



Flying Bracket

ACCESSORIES A 2

Wall Mount



ball and socket joint flange (08125)
+ 08125/plate
Order No. **08125/set**

Wall Mount



for U-brackets, max. load 40 kg,
incl. (M10 x 70 mm socket head screw,
M10 hex lock nut and flat washer)
for 8"-12" speakers
Order No. **08130/F/269/w** (RAL 9010)
Order No. **08130/F/269**

Wall Mount



M10, max. load 15 kg,
for permanent installation,
incl. tilt angle stop
Order No. **08131/F**
Order No. **08131/F/w** (RAL 9010)

Wall Mount



2 x M6 fixing holes (d=73 mm),
1 x M10 fixing hole (center),
max. load 25 kg
Order No. **03034**

Spacer



for Wall Mount (03034)
polyurea coated
Order No. **03034/spc**

Cover



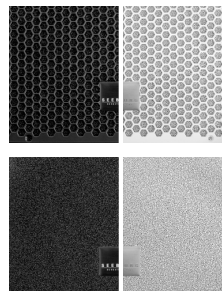
for A 2, padded
Order No. **01243**

Rain Cover



for A 2,
with zipper
Order No. **01243/outdoor**

Honeycomb Grilles



for A 2 front replacement.
Foam behind grille
Order No. **97004/hex/compl**
Order No. **97004/hex/compl/w**
(RAL 9010)
Foam in front of grille
Order No. **97004/compl**
Order No. **97004/compl/w**
(RAL 9010)



Spacer -> Wall Mount