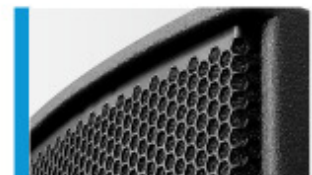




High output universal HiMid system fitted with a classic 2 x 8" Nd / 1" driver combination. Equally suited as a strong top in combination with a subwoofer or as a stand alone system for speech reproduction over short to medium distances. Four M10 mounting points, and a fifth as an optional alternative to the speaker stand socket, in combination with the comprehensive accessory range, allow simple vertical or horizontal mounting. The integrated digital amplifier technology provides 500 / 150 Watt AES and DSP control. A range of factory-configured presets and volume settings can be selected.

## PRODUCT SPECIFICATIONS

<b>Speaker Components</b>	2 x 8" Nd / 1"
<b>Description</b>	HiMid Sound System
<b>Amp Power</b>	LF: 500 W AES / 110-230 V HF: 150 W AES / 110-230 V
<b>Rated Current</b>	0,6 A @ 230 V
<b>SPL</b> <small>Peak @ 1 m</small>	132 dB
<b>Max. Input Signal</b>	25 dBu
<b>DSP</b>	HDLM FPGA Processing 32 bit floating point
<b>AD / DA</b>	24 bit / 96 kHz
<b>Latency</b>	0,8 ms (analog in to analog out)
<b>Usable Range</b>	80 Hz - 20 kHz (- 6 dB)
<b>Tuning Frequency</b> <small>excursion minimum</small>	90 Hz
<b>X - Overpoint</b> <small>acoustical</small>	Depends on preset
<b>Coverage</b> <small>horizontal / vertical</small>	90° x 60° - rotatable
<b>Connectors</b>	Neutrik XLR in/out Neutrik PowerCon in/out
<b>Handles</b>	1 x
<b>Rigging / Fittings</b>	4 x M10, 2 x M6 35 mm pole mount
<b>Weight</b>	13,5 kg
<b>Size</b> <small>height x width x depth</small>	59,0 x 25,0 x 25,0 cm
<b>Order No.</b>	<b>00240/ II/dp</b>

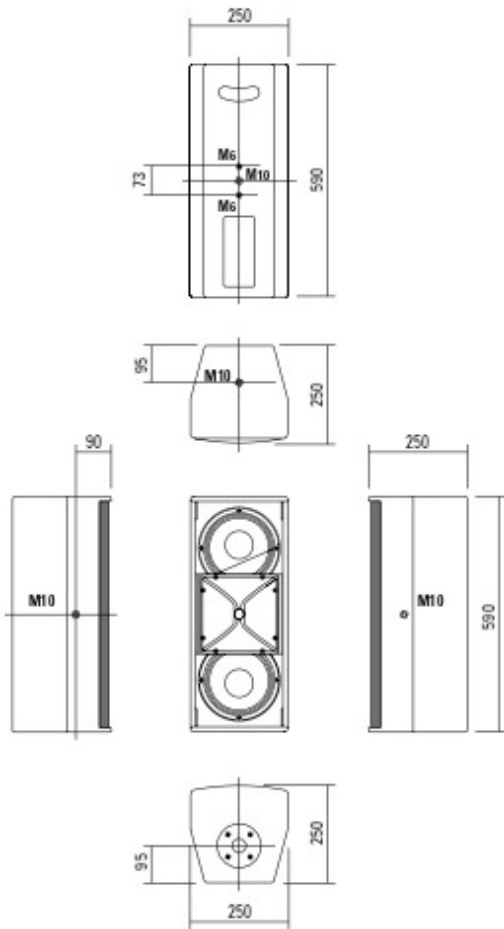


Connection Panel.



Ergonomically formed handle slot on the rear side for comfortable transport.

## DIMENSIONS



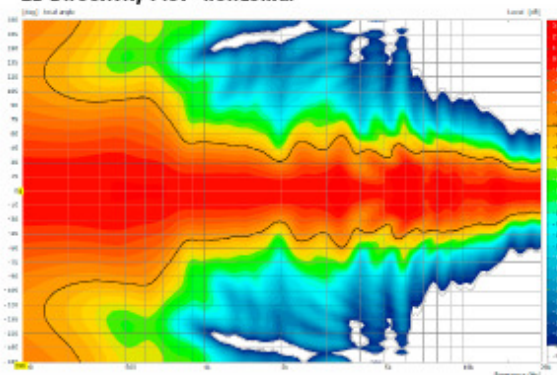
## APPLICATION



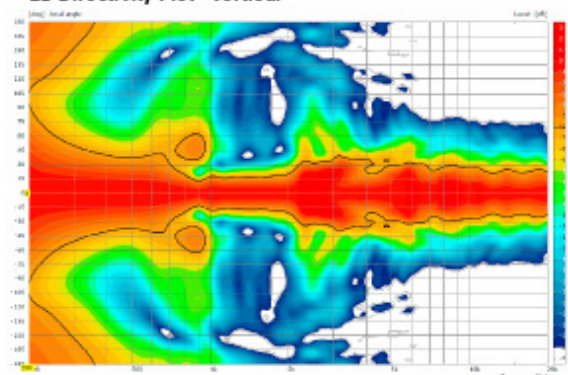
A 3 dp / G Sub 1501

## COVERAGE PATTERNS

2D Directivity Plot - horizontal



2D Directivity Plot - vertical



**The A3 dp features integrated digital amplifier electronics with a DSP controller. Various factory-configured presets and volume settings can be selected.**

High-grade electronic components from the industrial sector

and a first-class circuit design ensure excellent audio quality with low distortion and a minimal noise floor.

Highly efficient and "intelligent" limiter systems ensure optimum protection against overload, without restricting the possibilities offered by this high-performance sound system.

**Level**

Adjustment in 3 dB steps (-6 dB to +3 dB).

**Status**

**Mute LED**

Red light when the system is muted or under technically critical conditions.

**Limit LED**

Yellow light when the limiter is restricting the level.

**Signal LED**

Green light when the input signal exceeds -20 dBu

**Power LED**

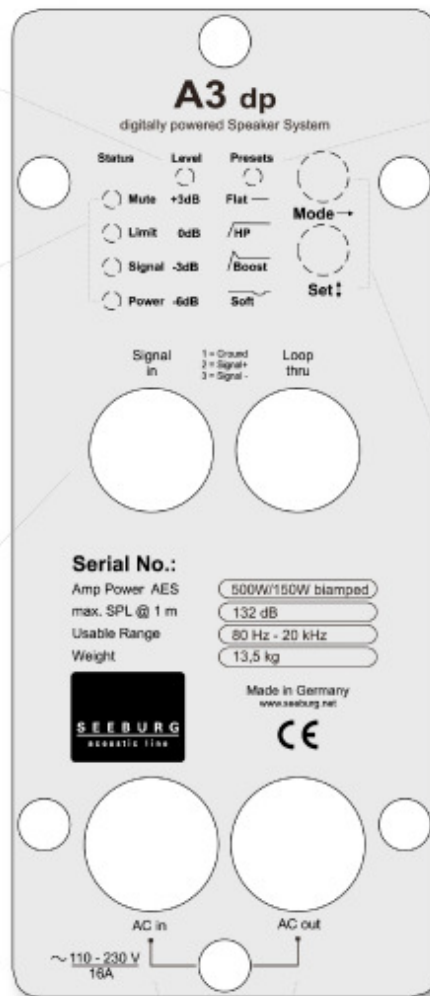
Green light when the system is switched on.

**XLR**

Symmetrical analog input max. Input +25 dBu.

Effective filter protection against HF interference and DC Voltages.

Electronically balanced to prevent noise.



**Presets**

**Flat**

This setting provides a linear frequency response with a neutral sound characteristics. Standard setting for many applications.

**HP**

Switches in a high pass filter for use in combination with a subwoofer.

**Boost**

The same neutral response as the „Flat“ setting, but with the addition of a bass boost.

**Soft**

Reduces the level in the frequency range from 2.5 - 5 kHz, to which the ear is particularly sensitive. This setting is recommended for high level reproduction of highly compressed music tracks.

**Mode - key**

Switches between control modes: Status, Level and Presets.

**Set - key**

Setting of various values and Mute on / off.

**PowerCon (blue)**

Power supply  
~ 110-230 V / 16 A max.

**PowerCon (grey)**

~ 110-230 V / 16 A max.  
loop through connector.

**Flying Bracket**



for A 3  
horizontal alignment,  
incl. (2 x M10 x 20 socket head  
screws, 2 x rubber washers,  
1 x plate)  
Order No. **01215/H/set/w** (RAL 9010)  
Order No. **01215/H/set**

**Flying Bracket**



for A 3  
incl. (black version: 2 x M10 x 20  
ergostyle lobe knob, 2 x rubber washers  
white version: 2 x M10 x 20 socket  
head screws, 2 x rubber washers)  
Order No. **01215/set/w** (RAL 9010)  
Order No. **01215/set**

**Ergostyle Lobe Knob**



for flying brackets, M10 x 20,  
with grip, adjustable  
Order No. **08171**

**Rubber Washer**



for flying brackets,  
5 mm x 40 mm Ø  
Order No. **01206**

**Plate**



for A 2 / A 3 flying brackets,  
horizontal alignment,  
replacement for pole mount flange,  
110 mm Ø flange with M10 nut  
Order No. **08119/M10/w** (RAL 9010)  
Order No. **08119/M10**

**Flange**



with ball and socket joint,  
with additional locking screw,  
M10 x 15, max. load 15 kg  
Order No. **08125**

**Flange**



35 mm ø → M10 x 16 mm,  
M8 x 20 star knob screw  
Order No. **08126**

**Truss Clamp**



incl. M10 Adapter,  
max. load 15 kg  
Order No. **01221**

**Doughty Quick Trigger Clamp**



max. load 250 kg  
Order No. **01223**

**Steel Safety**



6 mm x 600 mm, black,  
max. load 22 kg (BGI 810-3),  
quick connector undetachably  
Order No. **01376/6**

**Ring Screw**



M10- DIN 580  
Order No. **73700** (zincod)  
Order No. **73700/sw** (black zincod)

**TV Spigot**



10 mm internal thread,  
28 mm Ø  
Order No. **08128**



Flying Bracket, horizontal



Spacer → Wall Mount

## ACCESSORIES A 3 dp

### Wall Mount



ball and socket joint flange (08125) + 08125/plate

Order No. **08125/set**

### Wall Mount



for U-brackets, max. load 40 kg, incl. screws (M10 x 70 mm socket head screw, M10 hex lock nut and flat washer)

for 8"-12" speakers

Order No. **08130/F269**

### Wall Mount



2 x M6 fixing holes (d=73 mm), 1 x M10 fixing hole (center), max. load 25 kg

Order No. **03034**

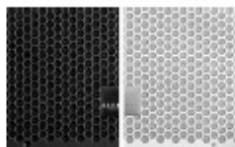
### Spacer



for Wall Mount (03034), polyurea coated

Order No. **03034/spc**

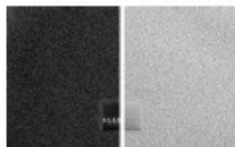
### Honeycomb Grilles



for A 3 front replacement.

Foam behind grille

Order No. **97006/hex/compl**  
Order No. **97006/hex/compl/w**  
(RAL 9010)



Foam in front of grille

Order No. **97006/compl.**  
Order No. **97006/compl/w**  
(RAL 9010)

### Hybrid Cable System



PowerCon-PowerCon / XLR-XLR

2,5 m Order No. **08462**  
5 m Order No. **08464**  
10 m Order No. **08466**  
15 m Order No. **08468**

### Speaker Stand



K&M, incl. wind up, height 138,5 to 218 cm, max. load 50 kg.

Order No. **03011**

K&M, height 137,5 to 218,5 cm, max. load 50 kg.

Order No. **03010**

### Cover



for A 3, padded

Order No. **01258**

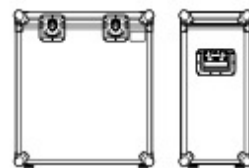
### Rain Cover



for A 3

Order No. **01258/outdoor**

### Flight Case Trunk



for 2 pcs. A 3 and accessories, standard, 7 mm birch multiplex, PVC coated, hinged lid, 2 x recessed sprung handles, 2 x butterfly catches, 4 x 100 mm blue wheels, 2 pcs. with brake, rubber feet, partition walls, interior lined with felt.

Order No. **16066**

