

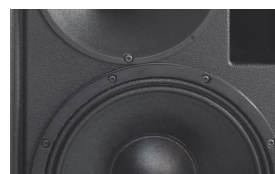
# Multi Purpose Sound System - digitally powered **A 6 dp**



The A 6 dp is a top class multifunctional high powered loudspeaker system. The integrated digital amplifier technology provides 2 x 500 Watt and DSP control. A range of factory-configured presets and volume settings can be selected. The A 6 dp is as equally well suited to use as a full range / high mid PA loudspeaker as it is to monitor applications. The rotatable 1" DPC (= Dual Pattern Control) horn maintains its 90° x 60° dispersion over a wide frequency range. Multiple M8 and M10 mounting points provide for simple installation.

## PRODUCT SPECIFICATIONS

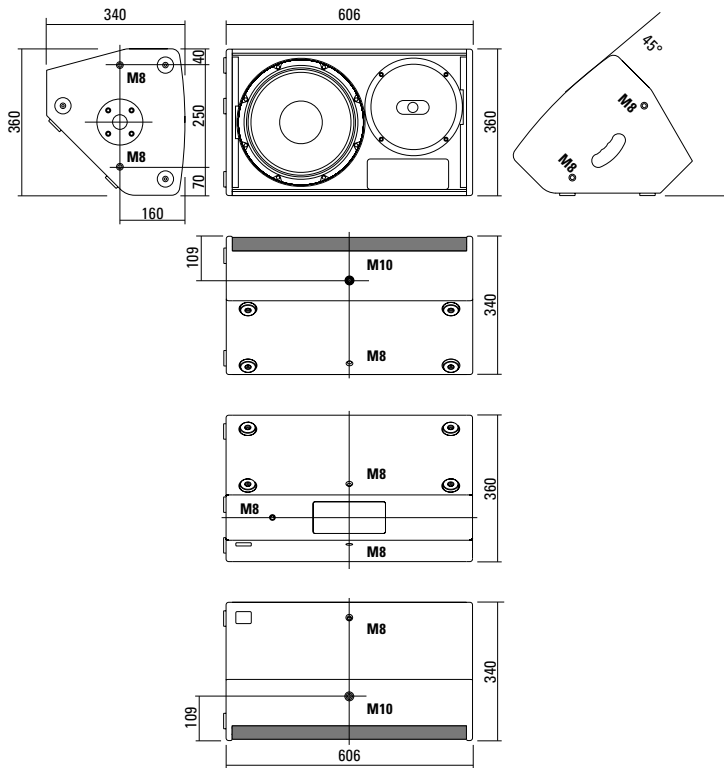
<b>Speaker Components</b>	12" Nd / 1" Nd
<b>Description</b>	Multi Purpose Sound System
<b>Amp Power</b>	2 x 500 W AES biamped / 110-230 V
<b>Rated Current</b>	0,55 A @ 230 V
<b>SPL</b> <small>Peak @ 1 m</small>	128 dB
<b>Max. Input Signal</b>	25 dBu
<b>DSP</b>	HDLM FPGA Processing 32 bit floating point
<b>AD / DA</b>	24 bit / 96 kHz
<b>Latency</b>	0,8 ms (analog in to analog out)
<b>Usable Range</b>	50 Hz - 20 kHz (- 6 dB)
<b>Tuning Frequency</b> <small>excursion minimum</small>	60 Hz
<b>X - Overpoint</b> <small>acoustical</small>	Depends on preset
<b>Coverage</b> <small>horizontal / vertical</small>	90° x 60° - rotatable
<b>Max. Splay Angle</b>	- - -
<b>Connectors</b>	Neutrik XLR in/out Neutrik PowerCon in/out
<b>Handles</b>	1 x
<b>Rigging / Fittings</b>	2 x M10 / 7 x M8 35 mm pole mount
<b>Weight</b>	16 kg
<b>Size</b> <small>height x width x depth</small>	60,6 x 36,0 x 34,0 cm
<b>Order No.</b>	<b>00260/II/dp</b>



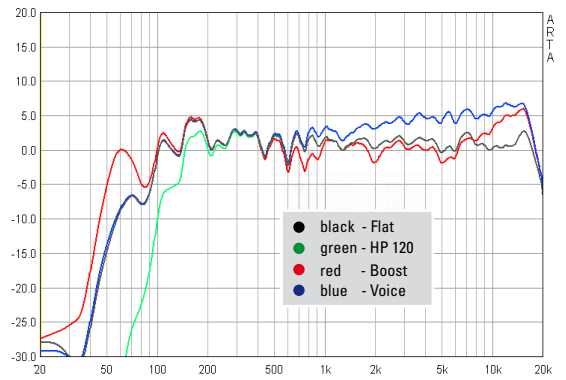
Neodym 12" Loudspeaker with water resistant diaphragm coating.



## DIMENSIONS

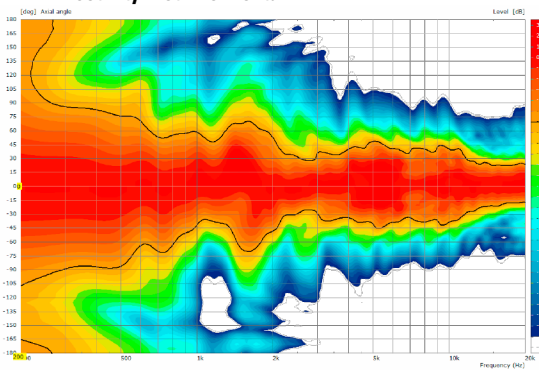


## Presets - Frequency Response

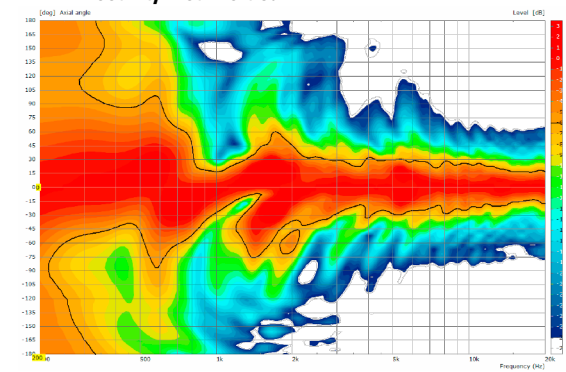


## COVERAGE PATTERNS

### 2D Directivity Plot - horizontal



### 2D Directivity Plot - vertical



**The A 6 dp features integrated digital amplifier electronics with a DSP controller. Various factory-configured presets and volume settings can be selected.**

High-grade electronic components from the industrial sector and a first-class circuit design ensure excellent audio quality

with low distortion and a minimal noise floor.

Highly efficient and "intelligent" limiter systems ensure optimum protection against overload, without restricting the possibilities offered by this high-performance sound system.

**Level**

Adjustment in 3 dB steps (-6 dB to +3 dB).

**Status**

**Mute LED**

Red light when the system is muted or under technically critical conditions.

**Limit LED**

Yellow light when the limiter is restricting the level.

**Signal LED**

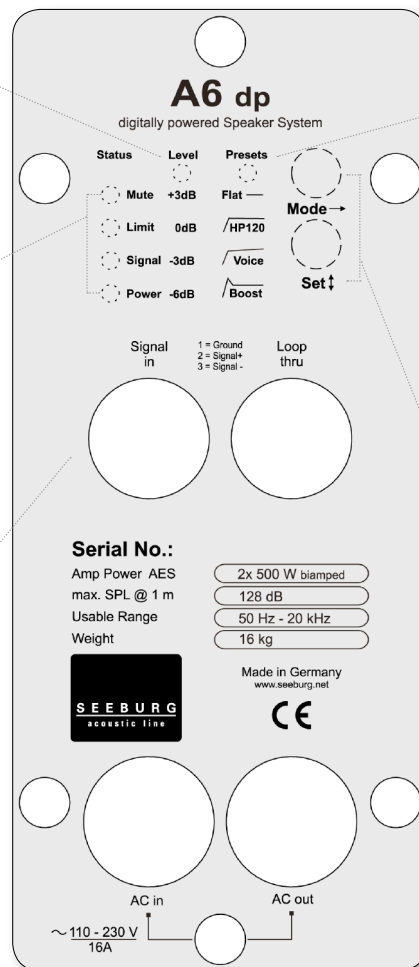
Green light when the input signal exceeds -20 dBu

**Power LED**

Green light when the system is switched on.

**XLR**

Symmetrical analog input max. Input +25 dBu. Effective filter protection against HF interference and DC Voltages. Electronically balanced to prevent noise.



**Presets**

**Flat**

This setting provides a linear frequency response with a neutral sound characteristics. Standard setting for many applications.

**HP 120 (high pass filter)**

Activates a high pass filter (cut-off frequency 120 Hz) for use in combination with a subwoofer

**Voice**

Optimises the frequency response in the mid and high frequency range for improved speech intelligibility.

**Boost**

The same neutral response as the „Flat“ setting, but with the addition of a bass boost.

**Mode - key**

Switches between control modes: Status, Level and Presets.

**Set - key**

Setting of various values and Mute on / off.

**PowerCon (blue)**

Power supply  
~ 110-230 V / 16 A max.

**PowerCon (grey)**

~ 110-230 V / 16 A max.  
loop through connector.

**Flying Bracket**



for A 6 / A 6 dp / TSM 12  
incl. (black version: 2 x M10 x 30  
adjustable handle screws  
white version: 2 x M10 x 20  
socket head screws)

Order No. **01216/set/w** (RAL 9010)  
Order No. **01216/set**

**Flying Bracket**



for A 6 / A 6 dp / TSM 12  
horizontal alignment,  
incl. accessories

Order No. **01216/H/set/w** (RAL 9010)  
Order No. **01216/H/set**

**Flying Bracket**



for AF 6 horizontal alignment,  
incl. (2 x M10 x 20 socket head  
screws, 2 x rubber washers)

Order No. **01216/H/AF/w** (RAL 9010)  
Order No. **01216/H/AF**

**Handle Screw**



for flying brackets, adjustable  
M10 x 30

Order No. **08375/30**

**Rubber Washer**



for flying brackets,  
5 mm x 40 mm Ø

Order No. **01206**

**Flange**



35 mm Ø → M10 x 16 mm,  
M8 x 20 star knob screw

Order No. **08126**

**Doughty Quick Trigger Clamp**



max. load 250 kg

Order No. **01223**

**Steel Safety**



6 mm x 600 mm, black,  
max. load 22 kg (BGI 810-3),  
quick connector undetachably

Order No. **01376/6**

**Ring Screw**



M10– DIN 580

Order No. **73700** (zincd)

Order No. **73700/sw** (black zincd)

**TV Spigot**



10 mm internal thread,  
28 mm Ø

Order No. **08128**

**Chain Fastener**



VBS 7 mm

Order No. **01378**

## ACCESSORIES A 6 dp

### Wall Mount



for U-brackets, max. load 40 kg,  
incl. (M10 x 70 mm socket head screw,  
M10 hex lock nut and flat washer)

for 8"-12" speakers

Order No. **08130/F/269/w** (RAL 9010)

Order No. **08130/F/269**

### Wall Mount



with tilt unit, max. load 40 kg

Order No. **08130**

### Speaker Stand



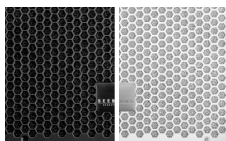
K&M, incl. wind up,  
height 138,5 to 218 cm,  
max. load 50 kg,

Order No. **03011**

K&M, height 137,5 to 218,5 cm,  
max. load 50 kg,

Order No. **03010**

### Honeycomb Grilles

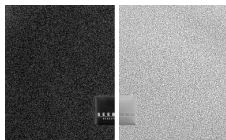


for A 6 front replacement.

Foam behind grille

Order No. **97010/hex/compl**

Order No. **97010/hex/compl/w**  
(RAL 9010)



Foam in front of grille

Order No. **97010/compl.**

Order No. **97010/compl/w**  
(RAL 9010)

### Cover



for A 6 / A 6 dp / TSM 12,  
padded

Order No. **01244**

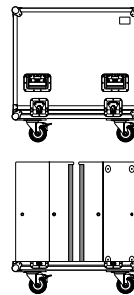
### Rain Cover



for A 6 / A 6 dp / TSM 12

Order No. **01244/outdoor**

### Flight Case



for 2 pcs. TSM 12 / A 6  
heavy duty, 9 mm birch multiplex, PVC  
coated, 6 x recessed sprung handles,  
4 x butterfly catches, 4 x 100 mm blue  
wheels, 2 pcs. with brake, partition  
walls, interior lined with felt.

Order No. **16010 P**

### Hybrid Cable System



PowerCon-PowerCon / XLR-XLR

2,5 m Order No. **08462**

5 m Order No. **08464**

10 m Order No. **08466**

15 m Order No. **08468**

