

Cylindric Wave Radiator **GL 24**



High-performance line array systems for optimised speech and music reproduction in acoustically challenging rooms. The precise, broadband sound bundling to a nominal 20° vertical dispersion is achieved through the acoustic coupling of two slightly curved line arrays, arranged one behind the other within the cabinet. This innovative arrangement is complemented by the horn guide in the high frequency range to ensure an exceptionally homogeneous and symmetrical 100° horizontal dispersion. The GL 24 system is particularly suitable for individual applications up to a distance of 25 metres, and can also be used as a downfill under the GL 16i. In the standard version, the GL 24 is a 2-way active system with separate amplifiers and controller. The xov-version includes a passive crossover, and can be operated with a single amplifier channel.

PRODUCT SPECIFICATIONS

	GL 24 a	GL 24 xov
Speaker Components	6 x 6,5" Nd / 24 x 1" Nd Tweeter	6 x 6,5" Nd / 24 x 1" Nd Tweeter
Description	Cylindric Wave Radiator	Cylindric Wave Radiator
Power <small>AES / Peak</small>	LF: 600 W / 1800 W HF: 225 W / 675 W	600 W / 1800 W
Impedance <small>nominal</small>	5,3 Ω / 5,3 Ω	5,3 Ω
SPL <small>1 W / Peak @ 1 m</small>	LF: > 98 dB / 130 dB HF: > 99 / 127 dB	> 130 dB
Usable Range	80 Hz - 20 kHz (-6 dB)	80 Hz - 20 kHz (-6 dB)
Tuning Frequency <small>excursion minimum</small>	90 Hz	90 Hz
X - Overpoint <small>acoustical</small>	Depends on preset	1,1 kHz
Coverage <small>horizontal / vertical</small>	100° x 20° (degressive curved)	100° x 20° (degressive curved)
Mechanical Splay Angle	13°	13°
Connectors	2 x Neutrik Speakon NL4MP in/out Coding: 1 +/- HF, 2 +/- LF	2 x Neutrik Speakon NL4MP in/out Coding: 1 +/- HiMid, 2 +/- loop thru
Handles	2 x	2 x
Rigging / Fittings	9 x M10 35 mm pole mount	9 x M10 35 mm pole mount
Weight	20,5 kg	21,0 kg
Size <small>height x width x depth</small>	106,0 x 18,9 x 34,3 (24,5) cm	106,0 x 18,9 x 34,3 (24,5) cm
Order No.	00520/a	00520/xov



GL 24 Horn.



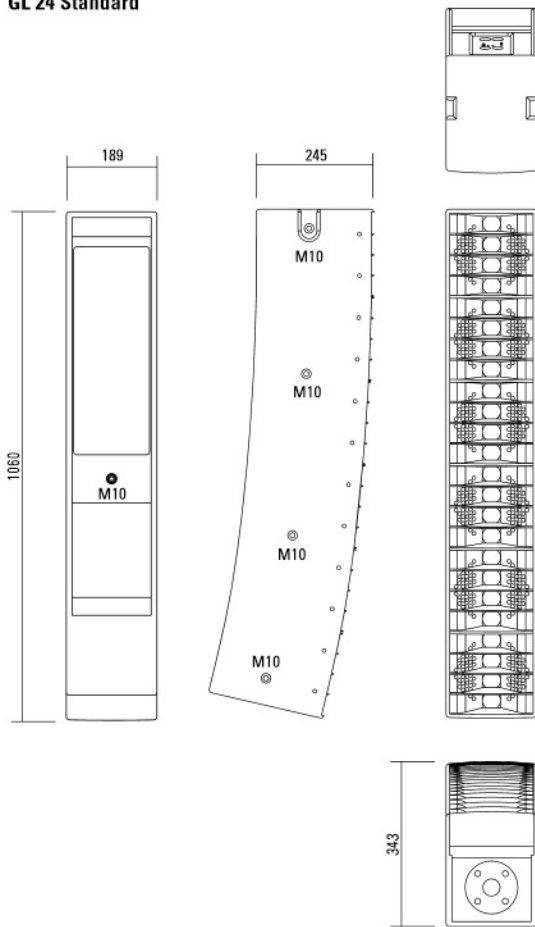
Flying Bracket.



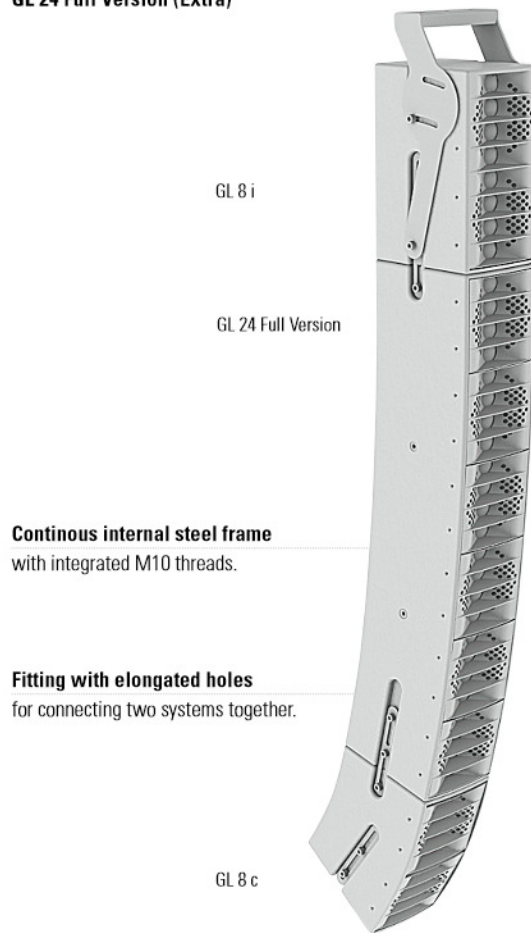
Integrated Fittings for easy connection.

DIMENSIONS

GL 24 Standard



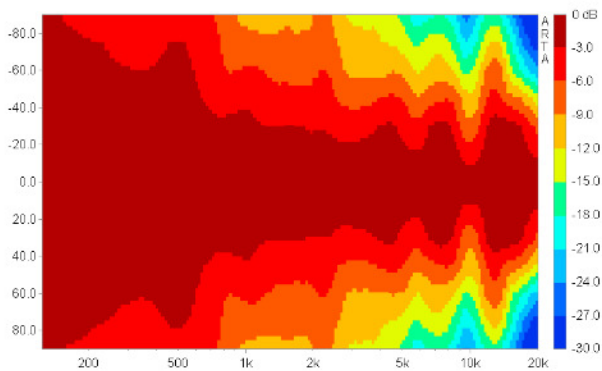
GL 24 Full Version (Extra)



COVERAGE PATTERNS

GL 24 horizontal - 2D Directivity Plot

100° horizontal dispersion for good performance in wide venues.



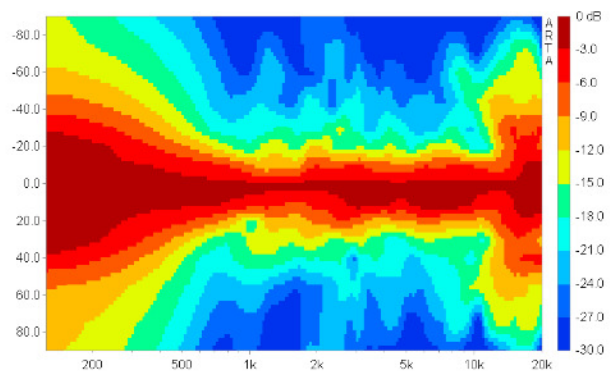
GL 24 vertical - 2D Directivity Plot

The j-curling leads to an unsymmetrical vertical dispersion, narrower in the upper section for long throw and wider in the lower section for near field.

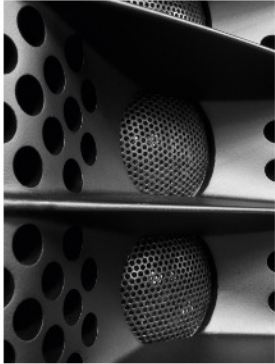


Controller Setups:

<https://www.seeburg.net/en/downloads>



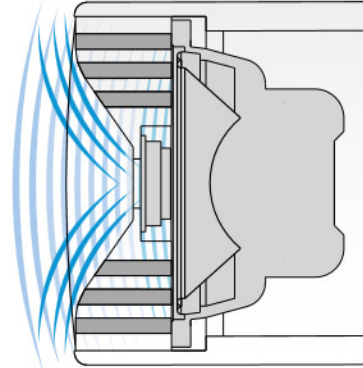
AMR® PRINCIPLE



AMR® PRINCIPLE

The horn for the 1" driver (1" tweeter) contains integrated channels which pass through the sound waves of the low-mid speakers behind it. These channels are sealed in the frequency range of the HF driver due to the air mass inside the channels acting as a reflector (AMR = Air Mass Reflection).

The low-mid speakers operate on an acoustical band pass with a center frequency close to the crossover frequency, leading to a smooth horizontal dispersion over a wide frequency range. Another asset is the extremely compact construction of this design.



APPLICATIONS



Flying Cradle.



Integrated 35 mm pole mount.



Flying Bracket.



GL 24 / G Sub 1501
For applications up to 25 m distance.



GL 16 i / GL 24 / G Sub
For applications up to 40 m distance.



2 x GL 16 i / GL 24
For applications up to 80 m distance.

Flying Cradle



for GL System,
max. load 120 kg
Order No. **01354**

Flying Bracket



for GL 24,
incl. (black version: 4 x M10 x 20
handle screws, white version:
4 x M10 x 20 socket head screws)
Order No. **01352/GL24/set/w** (RAL 9010)
Order No. **01352/GL24/set**

Handle Screw



for flying brackets, adjustable
Order No. **08375/20** (M10 x 20)
Order No. **08375/30** (M10 x 30)

Clamping Bar



for flying bracket GL 24 / GL 24 j,
for stronger angling
Order No. **01352/clamp**

Knurled Head Screw



Reduction screw for fastening
M10 Flange (08126).
Order No. **73755**

Connection Bar



GL 24 standard version → GL 8 c
for Downfill,
a pair, incl. accessories
Order No. **08159**

Flange



for Galeo S / G 3 / GL 16 / GL 24 /
K 24 flying bracket,
M20 x 35 mm with nut, incl. 1 x M20
x 30 socket head screw, 1 x flat
Order No. **08127/nut**

Quick Trigger TV Clamp



Max. load 200 kg
Order No. **01223/TV**

Doughty Quick Trigger Clamp



max. load 250 kg
Order No. **01223/250 kg**

TV Adapter



M20 external thread,
28 mm Ø
Order No. **08128/M20**

Shackle



for GL flying cradle,
max. load 1000 kg
Order No. **01372/GL**

Ring Screw



M10– DIN 580
Order No. **73700** (zincd)
Order No. **73700/sw** (black zincd)

Steel Safety



6 mm x 600 mm, black,
max. load 22 kg (BGI 810-3),
quick connector undetachably
Order No. **01376/6**

Chain Fastener



VBS 7 mm
Order No. **01378**



TV Adapter -> Flying Bracket



Clamping Bar



Spacer

ACCESSORIES GL 24

Wall Mount



2 x M6 fixing holes (d=73 mm),
1 x M10 fixing hole (center),
max. load 25 kg

Order No. **03034**

Spacer



for wall mount (03034),
M10 x 55 (screw),
polyurea coated

Order No. **03034/spc**

Wall Mount



for U-brackets, max. load 40 kg,
incl. screws (M10 x 70 mm socket
head screw, M10 hex lock nut and
flat washer)

Order No. **08130/F/400** (400 mm)

Order No. **08130/F/269** (269 mm)

Speaker Stand



K&M, incl. wind up,
height 138,5 to 218 cm,
max. load 50 kg

Order No. **03011**

K&M, height 137,5 to 218,5 cm,
max. load 50 kg

Order No. **03010**

Stretch Cover



for GL 24 / GL 24 j

Order No. **01233/stretch/black**

Order No. **01233/stretch/grey**

Order No. **01233/stretch/white**

Rain Cover



for GL 24, incl. low lid,
connectable to other covers of the
GL-system

Order No. **01233/outdoor/2**

Bag



for one unit GL 24

Order No. **01233**

Flight Case



for 2 pcs. GL 24 units,
and accessories, heavy duty, 9 mm
birch multiplex, PVC coated, hinged lid,
8 x recessed sprung handles,
2 x butterfly catches, 4 x 100 mm blue
wheels, 2 pcs. with brake, stackable,
inserts for accessories, interior lined
with felt, loading measurements,
Size (H x W x D): 48,0 x 115,5 x 61,0 cm

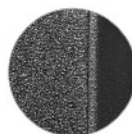
Order No. **16013/pro/T**

EXTRAS



Grille on Front

Order No. **01179/GL 24**



Acoustic Foam on Front

Order No. **01178/GL 24**



Full Version

Integrated Flying Frame with
connecting bars

Order No. **01177/GL 24**

Colour Selection

RAL 9010, Pure White

Order No. **01199/GL 24**