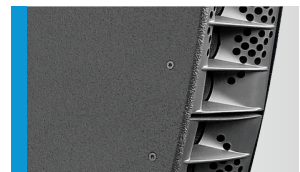




High-performance line array system for optimised speech and music reproduction in acoustically challenging rooms. The precise, broadband sound bundling to a nominal 50° vertical dispersion is achieved through the acoustic coupling of two slightly curved line arrays, arranged one behind the other within the cabinet. This innovative arrangement is complemented by the horn guide in the high frequency range to ensure an exceptionally homogeneous and symmetrical 100° horizontal dispersion. In the standard version, the GL 24 is a 2-way active system with separate amplifiers and controller. The xov-version includes a passive crossover, and can be operated with a single amplifier channel. GL 24j systems are particularly suitable for use as a single element in situations in which the loudspeaker has to be flown at a great height, and can be combined with other GL systems to cater for a wide range of applications.

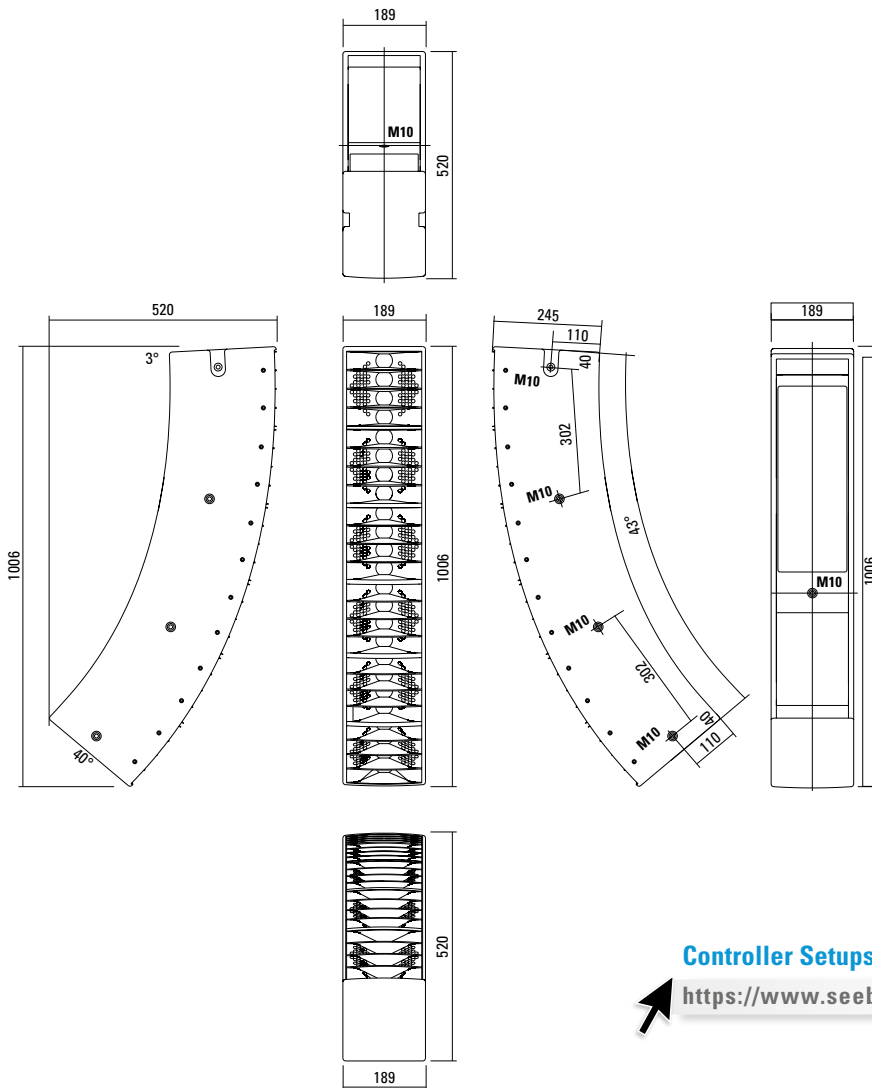
## PRODUCT SPECIFICATIONS

	GL 24 j a	GL 24 j xov
<b>Speaker Components</b>	6 x 6,5" Nd / 24 x 1" Nd Tweeter	6 x 6,5" Nd / 24 x 1" Nd Tweeter
<b>Description</b>	Cylindric Wave Radiator	Cylindric Wave Radiator
<b>Power</b> <small>AES / Peak</small>	LF: 600 W / 1800 W HF: 225 W / 675 W	600 W / 1800 W
<b>Impedance</b> <small>nominal</small>	5,3 Ω / 5,3 Ω	5,3 Ω
<b>SPL</b> <small>1 W / Peak @ 1 m</small>	LF: > 98 dB / 130 dB HF: > 99 / 127 dB	> 130 dB
<b>Usable Range</b>	80 Hz - 20 kHz (-6 dB)	80 Hz - 20 kHz (-6dB)
<b>Tuning Frequency</b> <small>excursion minimum</small>	90 Hz	90 Hz
<b>X - Overpoint</b> <small>acoustical</small>	Depends on preset	1,1 kHz
<b>Coverage</b> <small>horizontal / vertical</small>	100° x 50° (j-curved)	100° x 50° (j-curved)
<b>Mechanical Splay Angle</b>	43°	43°
<b>Connectors</b>	2 x Neutrik Speakon NL4MP in/out Coding: 1 +/- HF, 2 +/- LF	2 x Neutrik Speakon NL4MP in/out Coding: 1 +/- HiMid, 2 +/- loop thru
<b>Handles</b>	2 x	2 x
<b>Rigging / Fittings</b>	9 x M10	9 x M10
<b>Weight</b>	20,5 kg	21 kg
<b>Size</b> <small>height x width x depth</small>	100,6 x 18,9 x 52,0 (24,5) cm	100,6 x 18,9 x 52,0 (24,5) cm
<b>Order No.</b>	<b>00520/j/a</b>	<b>00520/j/xov</b>



Integrated fittings for easy connection.

## DIMENSIONS



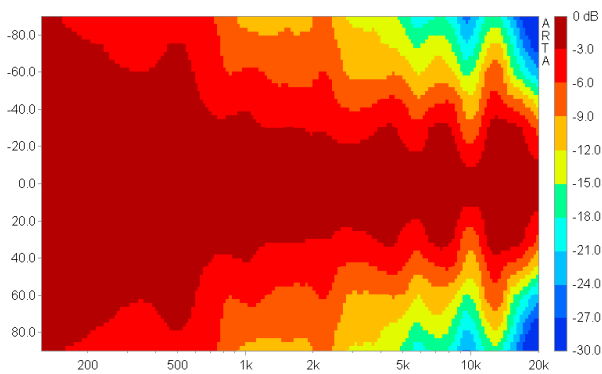
### Controller Setups:

<https://www.seeburg.net/en/downloads>

## COVERAGE PATTERNS

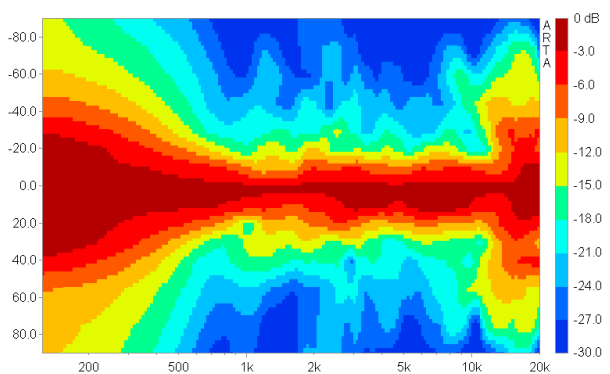
### GL 24 horizontal - 2D Directivity Plot

100° horizontal dispersion for good performance in wide venues.

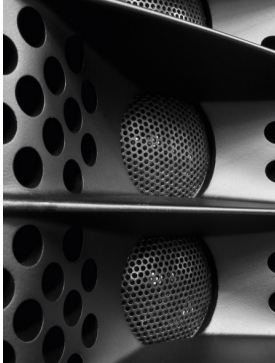


### GL 24 vertical - 2D Directivity Plot

The j-curving leads to an unsymmetrical vertical dispersion, narrower in the upper section for long throw and wider in the lower section for near field.



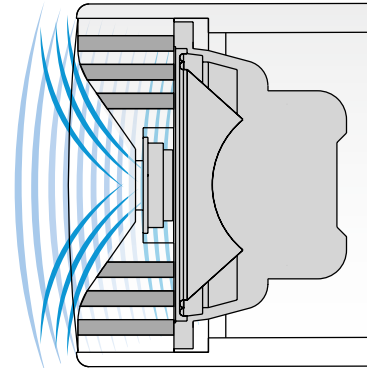
## AMR® PRINCIPLE



### AMR® PRINCIPLE

The horn for the 1" driver (1" tweeter) contains integrated channels which pass through the sound waves of the low-mid speakers behind it. These channels are sealed in the frequency range of the HF driver due to the air mass inside the channels acting as a reflector (AMR = Air Mass Reflection).

The low-mid speakers operate on an acoustical band pass with a center frequency close to the crossover frequency, leading to a smooth horizontal dispersion over a wide frequency range. Another asset is the extremely compact construction of this design.



## APPLICATIONS



Flying Cradle.



GL 24 j dp Connection Panel.



GL 8 i / GL 24 j / GL 8 c



GL 8 i / GL 24 j

## ACCESSORIES GL 24 j

### Flying Cradle



for one unit GL 24 or  
for up to 6 units GL 16  
Order No. **01354**

### Flying Bracket



for GL 24,  
incl. (black version:  
4 x M10 x 20 handle screws  
white version:  
4 x M10 x 20 socket head screws)  
Order No. **01352/GL24/set/w** (RAL 9010)  
Order No. **01352/GL24/set**

### Handle Screw



for flying brackets, adjustable  
Order No. **08375/20** (M10 x 20)  
Order No. **08375/30** (M10 x 30)

### Clamping Bar



for flying bracket GL 24 / GL 24 j,  
for stronger angling  
Order No. **01352/clamp**

### Doughty Quick Trigger Clamp



max. load 250 kg  
Order No. **01223/250 kg**

### Quick Trigger TV Clamp



Max. load 200 kg  
Order No. **01223/TV**

### Shackle



for GL-flying cradle,  
max. load 1000 kg  
Order No. **01372/GL**

### Ring Screw



M10– DIN 580  
Order No. **73700** (zincd)  
Order No. **73700/sw** (black zincd)

### TV Adapter



M20 external thread,  
28 mm Ø  
Order No. **08128/M20**

### Steel Safety



6 mm x 600 mm, black,  
max. load 22 kg (BGI 810-3),  
quick connector undetachably  
Order No. **01376/6**

### Stretch Cover



for GL 24 / GL 24 j  
Order No. **01233/stretch/black**  
Order No. **01233/stretch/grey**  
Order No. **01233/stretch/white**



TV Adapter -> Flying Bracket