

Two-Way Line Array **Galeo C**



A compact and versatile high performance Line Array featuring various innovative acoustical and mechanical solutions. This 2 x 8" / 1.4" system is driven two-way active. The Galeo C is a visually unobtrusive sound reinforcement system equally suited to high end permanent installations and demanding tour applications.

A choice of horizontal coverage angles of 70° or 100° is provided by the interchangeable AMR horn elements. The maximum splay angle of 14° allows a high degree of curvature in the line array with a small number of cabinets. The innovative integrated flying hardware allows the curving angle to be set after the system has been lifted up, thereby simplifying the set-up process.

PRODUCT SPECIFICATIONS

Speaker Components	2 x 8" Nd (2,5" VC) / 1,4" Nd (3" VC)
Description	Two-Way Line Array Unit
Power <small>AES / Peak</small>	LF: 600 W / 1800 W HF: 110 W / 330 W
Impedance <small>nominal</small>	LF: 16 Ω / HF: 16 Ω
SPL <small>1 W / Peak @ 1m</small>	LF: 98 dB / 131 dB HF: 111 dB / 136 dB
Usable Range	80 Hz - 20 kHz (-6 dB)
Tuning Frequency <small>excursion minimum</small>	85 Hz
X-Overpoint <small>acoustical</small>	Depends on preset
Coverage <small>horizontal x vertical</small>	100° x 14° (100°-version) 70° x 14° (70°-version)
Max. Splay Angle	14°
Connectors	2 x Neutrik Speakon NL4 in/out Coding: 1 +/- HF, 2 +/- LF
Handles	4 x
Rigging / Fittings	6 x M10 Integrated flying hardware
Weight	22 kg
Size <small>height x width x depth</small>	24,0 x 58,0 x 46,0 cm
Order No.	00410/100 (100° - Version) 00410/70 (70° - Version)

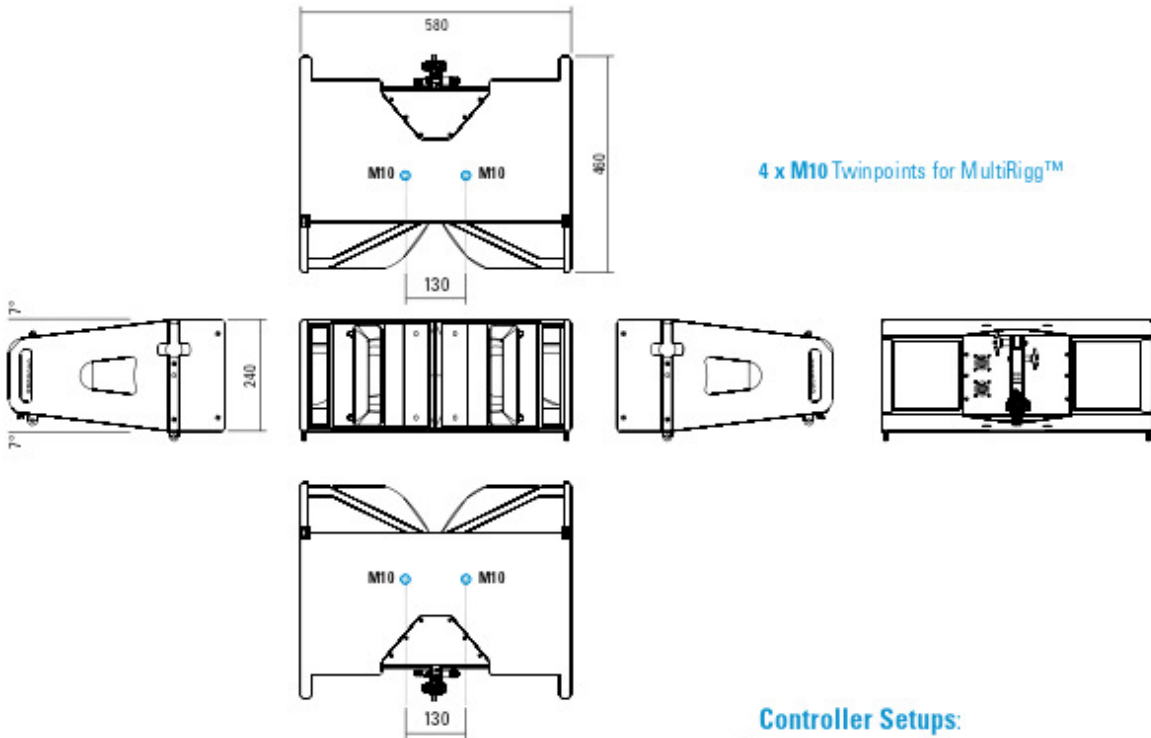


100° Version.



MultiRigg™ Hardware.

DIMENSIONS



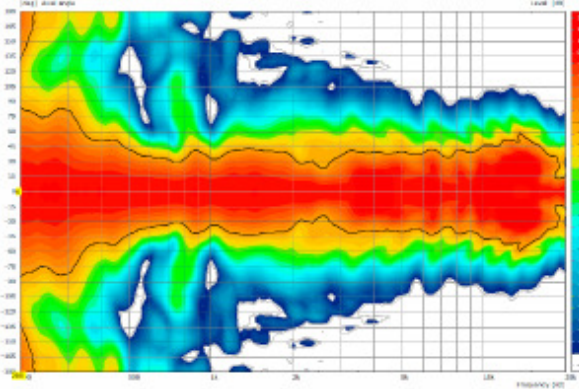
4 x M10 Twinpoints for MultiRigg™

Controller Setups:

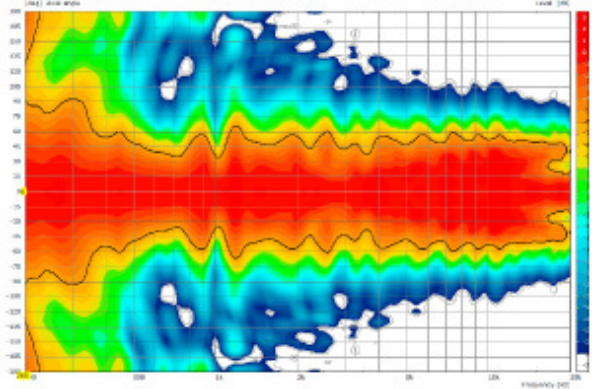
<http://www.seeburg.net/en/downloads>

MEASUREMENTS

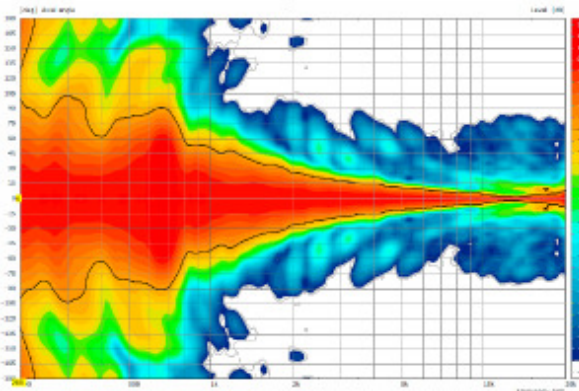
Galeo C 70° - 2D Directivity Plot - horizontal



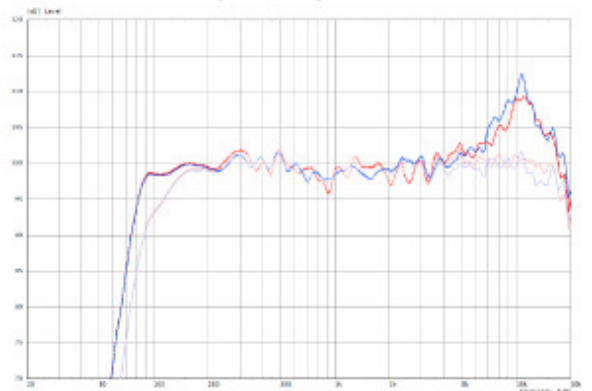
Galeo C 100° - horizontal - 2D Directivity Plot



Galeo C 70° / 100° - Directivity Plot - vertical



Galeo 70° / 100° - Frequency Response with Presets



Flying Frame



for Galeo C / Galeo C Sub,
incl. accessories
(3 pcs. 8 x 25 mm ball lock pins,
load adapter and 100 mm distance
bar) - also for ground stack.
Order No. **01326**

Stacking Board



fits: Galeo C Sub,
up to 6 x groundstacked Galeo C units,
incl. accessories (3 x ball lock pins
8 x 25, 1 x screw M20 x 80,
1 x screw M20 x 35), 3,2 kg
Order No. **01396/C**

MultiRigg™



swiveling fastening solution
for horizontal and vertical alignment,
for flown / ground stacked / mounted
applications, incl. accessories
(2 x star knob screws M10 x 18 mm,
1 x handle screw MB x 55 mm),
max. load 50 kg
Order No. **01360**

Twinpoint-Adapter



for 2 x M10 Twinpoints
(distance = 130 mm),
with central stud bolt
Order No. **01197**

Ball Lock Pins



for Galeo C / Galeo C Sub, flying frame
Order No. **01380/6x25** (6,0 x 25,0 mm)
Order No. **01380/8x25** (8,0 x 25,0 mm)

Load Adapter



for Galeo C / Galeo C Sub flying frame
Order No. **01327**

Clamp Adapter



for Galeo C / Galeo C Sub
flying frame-> truss
Order No. **01328**

Bottom Pull Adapter



for Galeo C top unit
Order No. **01329/B**

Top Pull Adapter



for Galeo C flying frame
Order No. **01329/T**

Shackle



cambered, high-quality tempered,
with bolt (ø 16 mm), weight: 0,33 kg,
WLL 2000 kg
Order No. **01372/2000**

Speaker-Cable NL4



NL4, incl. cable fastener
Order No. **08452** (5 m)
Order No. **08453** (10 m)
Order No. **08454** (15 m)

Patch Cable



for Galeo C
Order No. **08448**

Lashing Straps



Safetex 25A-B-1-DR, 0,8 t, one-piece,
length: 6 m, width: 25 mm
Order No. **01320**



Stacking Board



Stacking Board



Load Adapter



Clamp Adapter

ACCESSORIES Galeo C

AMR Reflectors 100°



for Galeo C,
consisting of 2 pcs.
AMR reflectors 100°,
incl. fittings
Order No. **08139/100**

AMR Reflectors 70°



for Galeo C,
consisting of 2 pcs.
AMR reflectors 70°,
incl. fittings
Order No. **08139/70**

Utility-Box

for Galeo C-Dolly,
fits for 2 pcs. flying frames
and accessories
Order No. **01262/UB**

Rain Cover

for 4 x Galeo C top units
Order No. **01238/C/outdoor**

Dolly



for Galeo C, up to 12 stacked units,
stackable, Size (W x D): 100 x 60 cm
Order No. **01262**

Flight Case



for 4 pcs. Galeo C units, heavy duty,
9 mm birch multiplex, PVC coated black,
10 x recessed sprung handles,
2 x butterfly catches, 4 x scanner
windows, 4 x 100 mm blue wheels with
brake, interior lined with felt
Size (H x W x D): 79 x 104 x 56 cm
Order No. **16002/C**

Flight Case Trunk



for 2 pcs. Galeo C flying frames,
central shelf for accessories (16 cm),
PVC coated black, 2 x propstays, 6 x
recessed sprung handles, 2 x butterfly
catches, 4 x 100 mm blue wheels, 2 pcs.
with brake, interior lined with felt
Size (H x W x D): 77 x 75 x 48 cm
Order No. **16003/C**



Flight Case Trunk



Flight Case



Dolly