

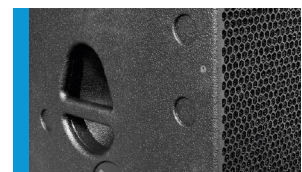
Bass Extension - digitally powered **K Sub 1801 dp**



The K Sub 1801 is a compact high-power subwoofer for universal use in the frequency range of 33 Hz to 140 Hz. The classic bass reflex design with streamlined ports leads to an exceptional precise and deep bass response with medium throw. The integrated 2400 Watt Class D amplifier electronics are controlled by a DSP with three filter presets, cardioid mode and various volume settings. Two ergonomically designed handles ensure perfect handling. For transportation, a wheelboard can be mounted to the front side.

PRODUCT SPECIFICATIONS

Speaker Components	18"
Description	Digitally Powered Bass Extension
Amp Power	1500 Watt AES (single mode) 110-230 V 2400 Watt AES (dual mode) 110-230 V
Rated Current	4,2 A @ 230 V
SPL <small>Peak @ 1 m</small>	137 dB
Max. Input Signal	25 dBu
DSP	HDLM FPGA Processing 32 bit floating point
AD / DA	24 bit / 96 kHz
Latency	0.8 ms (analog in to analog out)
Usable Range <small>- 6 dB</small>	33 Hz - 100 / 120 / 140 Hz
Tuning Frequency <small>excursion minimum</small>	38 Hz
Connectors	Neutrik XLR in/out Neutrik PowerCon in/out Neutrik Speakon NL4MP out
Handles	4 x
Rigging / Fittings	M20 on top and side Wheel board fittings
Weight	45,0 kg (+7,0 kg wheel board)
Size <small>height x width x depth</small>	69,8 x 51,2 x 56,0 cm
Order No.	01060/dp



Two ergonomically designed handles ensure perfect handling.

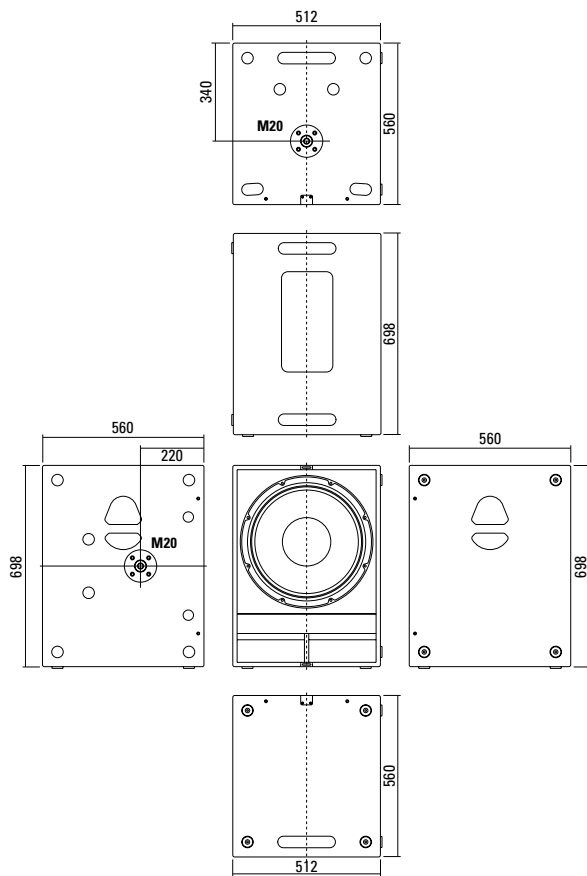


Robust front grille.



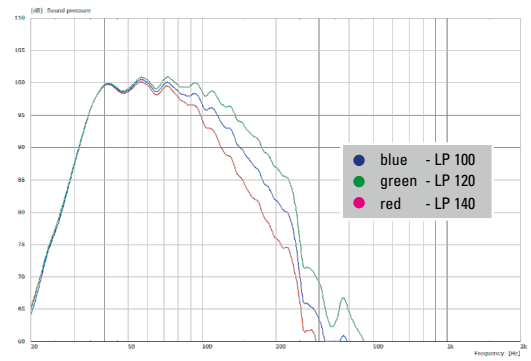
Four convenient bar handles at the corner.

DIMENSIONS

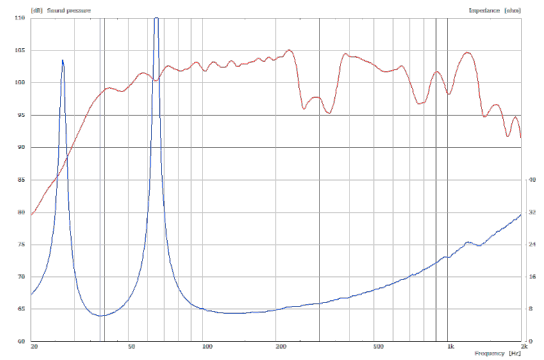


MEASUREMENT

Frequency Response with Presets



Sensitivity 1 W @ 1 m + Impedance



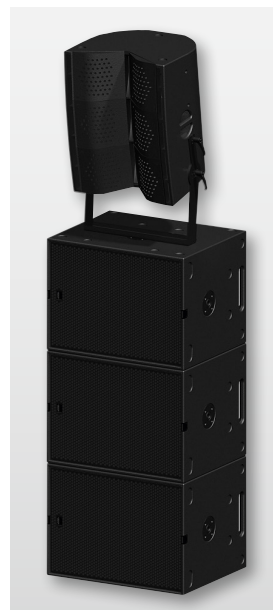
APPLICATIONS



2 x K Sub 1801 / K 24



K Sub 1801 / GL 24



2 x K Sub 1801 / G3



3 x K Sub 1801 dp
Cardioid set-up

The K Sub 1801 dp features integrated digital amplifier electronics with a DSP controller. Various factory-configured presets and volume settings can be selected.

High-grade electronic components from the industrial sector and a first-class circuit design ensure excellent audio quality with low distortion and a minimal noise floor.

Highly efficient and "intelligent" limiter systems ensure optimum protection against overload, without restricting the possibilities offered by this high-performance sound system.

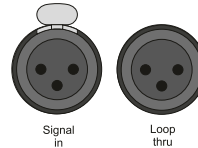
K Sub 1801dp

digitally powered Bass Extension

Serial No.:

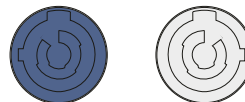
Power	1500 W AES (single Mode)
	2400 W AES (dual Mode)
Input Impedance	10 k Ω
max. SPL @ 1 m	137 dB
Frequency Range	33 Hz - 140 Hz
Mains Supply	110 - 230 V
Weight	45 kg

- Status Level Presets
- Mute +3dB
 - Limit 0dB
 - Signal -3dB
 - Power -6dB
- 1 = Ground / 2 = Signal+ / 3 = Signal-
- LP100
LP120
LP140
Cardioid



Caution

Do not touch
Aluminum plate might become hot
during operation



PowerCon (blue)
Power supply
~110-230 V / 16 A max.

PowerCon (grey)
~110-230 V / 16 A max.
loop through connector

Level

Adjustment in 3 dB steps (-6 dB to +3 dB).

Status

Mute LED

Red light when the system is muted or under technically critical conditions.

Limit LED

Yellow light when the limiter is restricting the level.

Signal LED

Green light when the input signal exceeds -20 dBu

Power LED

Green light when the system is switched on.

XLR

Symmetrical analog input max. Input +25 dBu. Effective filter protection against HF interference and DC Voltages. Electronically balanced to prevent noise.

Presets

LP 100

Low Pass filter with 100 Hz cutoff frequency.

LP 120

Low Pass filter with 120 Hz cutoff frequency.

LP 140

Low Pass filter with 140 Hz cutoff frequency.

Cardioid mode

For directional bass reproduction in conjunction with an additional subwoofer. This mode is applied only to the rear-facing sub. The level reduction to the rear can be up to 20 dB, depending on the actual physical setup and the frequency.

Mode - key

Switches between control modes Status, Level and Presets.

Set - key

Setting of various values and Mute on / off.

Speakon NL4MP

Parallel output connector for a passive K Sub 1801 with an 8 Ω impedance.

ACCESSORIES K Sub 1801 dp

Speaker Pole

M20, with wind up, K&M

Order No. **03023**



M20, adjustable, K&M

Order No. **03022**



Feet

ABS foot, 38 x 14 mm, black

Order No. **07608**



Rubber foot, 38 x 10 mm, black

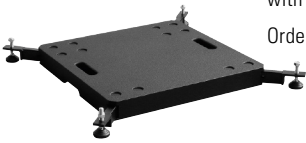
Order No. **07602**



Ground Stacking Board

for K Sub 1801 / G Sub
with extendable legs

Order No. **01394**



Wheel Board

for G Sub / K Sub 1801,
stackable, 7 kg

Order No. **01260**



Cover

for K Sub 1801 with wheel board

Order No. **01257**



Hybrid Cable System

PowerCon-PowerCon / XLR-XLR

5 m Order No. **08464**

10 m Order No. **08466**

15 m Order No. **08468**

