



The construction principle of the high powered K 20 mid-high cabinet allows for flexibility of use in horizontal or vertical orientations. Optimised placement of the 2 x 10" / 1.4" drivers in relation to one another ensures a very precise phase and coverage characteristic. For installation applications, the universal MultiRigg™ be used to mount the system. The K 20 is available in a self-powered version, and in a version with a passive crossover. 2 different horn forms are available to better cover various Sound Reinforcement situations.

PRODUCT SPECIFICATIONS

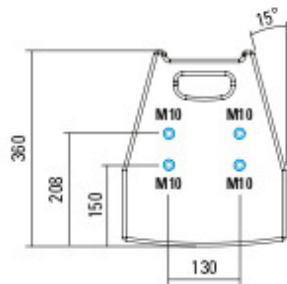
| | K 20 | K 20 dp |
|--|--|--|
| Speaker Components | 2 x 10" Nd / 1.4" Nd | 2 x 10" Nd / 1.4" Nd |
| Description | High Power HiMid System | Digitally Powered HiMid System |
| Power <small>AES / Peak</small> | 800 W / 2400 W | --- |
| Amp Power <small>AES</small> | --- | LF: 1000 W / HF: 350 W / 110-230 V |
| Impedance <small>nominal</small> | 4 Ω | --- |
| Rated Current | --- | 1,8 A @ 230 V |
| SPL <small>1 W / Peak @ 1 m</small> | 100 dB / 134 dB | --- / 134 dB |
| Max. Input Signal | --- | 25 dBu |
| DSP | --- | HDLM FPGA Processing 32 bit floating point |
| AD / DA | --- | 24 bit / 96 kHz |
| Latency | --- | 0,8 ms (analog in to analog out) |
| Usable Range | 70 Hz - 18 kHz (-6 dB) | 70 Hz - 18 kHz (-6 dB) |
| Tuning Frequency <small>excursion minimum</small> | 80 Hz | 80 Hz |
| X-Overpoint <small>acoustical</small> | 900 Hz | Depends on preset |
| Coverage <small>horizontal / vertical</small> | 90° x 60° (60° x 50°), rotatable | 90° x 60° (60° x 50°), rotatable |
| Connectors | 2 x Neutrik Speakon NL4MP in/out Coding: 1 +/- HiMid, 2 +/- loop thru | Neutrik XLR in/out Neutrik PowerCon in/out |
| Handles | 2 x | 2 x |
| Rigging / Fittings | 10 x M10 for MultiRigg™ 35 mm Pole Mount | 10 x M10 for MultiRigg™ 35 mm Pole Mount |
| Weight | 22,5 kg | 22 kg |
| Size <small>height x width x depth</small> | 66,0 x 30,0 x 36,0 cm | 66,0 x 30,0 x 36,0 cm |
| Order No. | 01024/90° (90° x 60° Version) <small>01024/90°/608</small> (90° x 60° Version) | 01024/dp/90° (90° x 60° Version) <small>01024/dp/90°/608</small> (90° x 60° Version) |



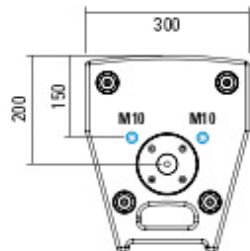
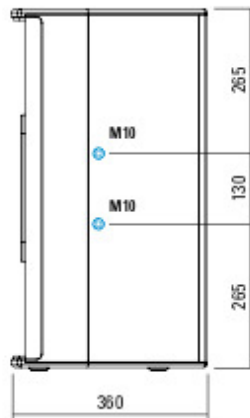
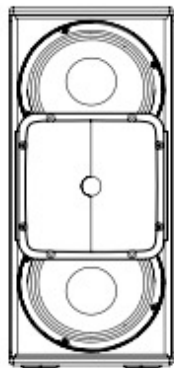
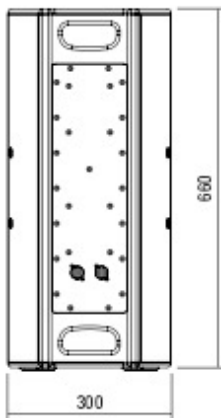
Simple installation with the universal MultiRigg™.



DIMENSIONS



5 x M10 Twinpoints for MultiRigg™

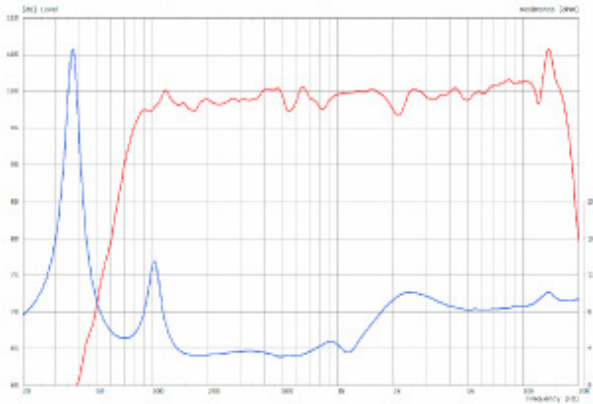


APPLICATIONS



MEASUREMENTS

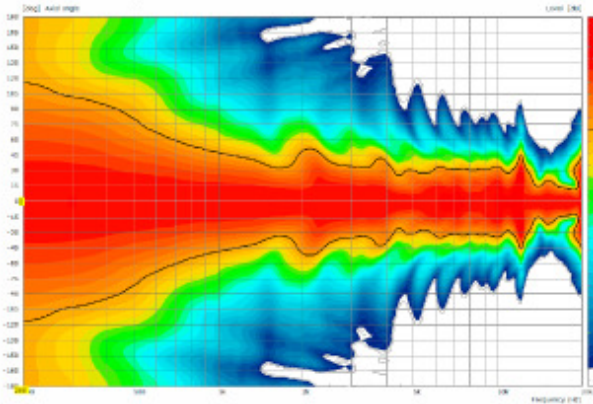
K 20 - Sensitivity 1 W @ 1 m + Impedance with Preset



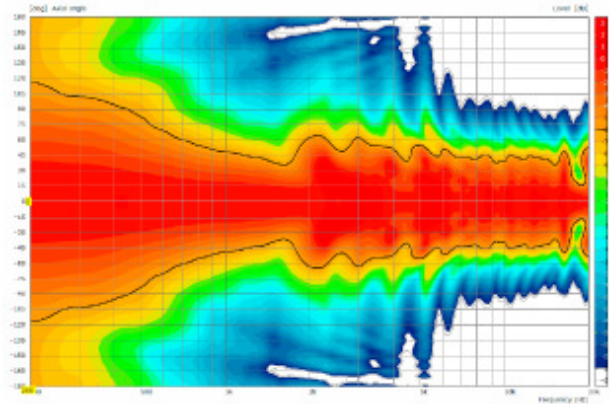
Controller Setups:

➔ <http://www.seeburg.net/de/downloads>

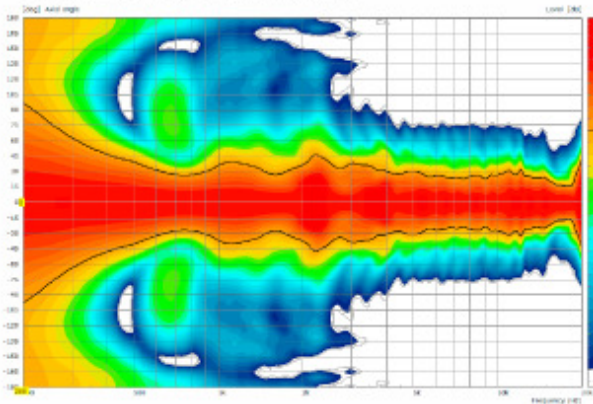
2D Directivity Plot - horizontal - 60° x 50°



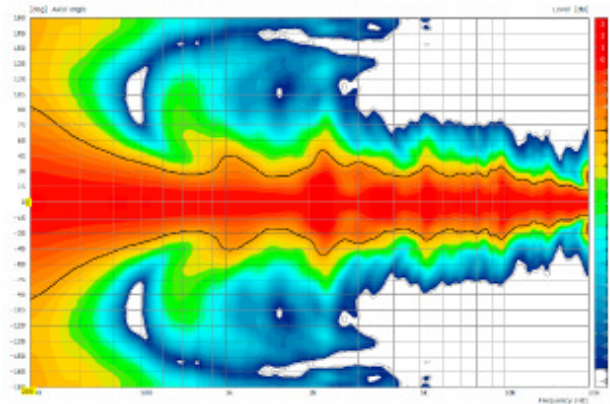
2D Directivity Plot - horizontal - 90° x 60°



2D Directivity Plot - vertikal - 60° x 50°



2D Directivity Plot - vertikal - 90° x 60°



The K 20 dp features integrated digital amplifier electronics with a DSP controller. Various factory-configured presets and volume settings can be selected.

High-grade electronic components from the industrial sector and a first-class circuit design ensure excellent audio quality with low distortion and a minimal noise floor.

Highly efficient and "intelligent" limiter systems ensure optimum protection against overload, without restricting the possibilities offered by this high-performance sound system.

K20 dp

digitally powered Sound System

Serial No.:

| | |
|--------------------|---------------------|
| Amp Power AES | 1000W LF / 350W HF |
| max.SPL @ 1m | 134 dB |
| Usable Range | 70 Hz - 18 kHz |
| Tuning Frequency | 80 Hz |
| Coverage hor./ver. | 90° x 60° rotatable |
| Weight | 22 kg |



Made in Germany
www.seeburg.net



Caution

Only use the dedicated hardware to fly the K20 units

Level

Adjustment in 3 dB steps (-6 dB to +3 dB).

Status

Mute LED

Red light when the system is muted or under technically critical conditions.

Limit LED

Yellow light when the limiter is restricting the level.

Signal LED

Green light when the input signal exceeds -20 dBu.

Power LED

Green light when the system is switched on.

XLR

Symmetrical analog input max. Input +25 dBu. Effective filter protection against HF interference and DC Voltages. Electronically balanced to prevent noise.

PowerCon (blue)

Power supply ~ 110-230 V / 16 A max.

PowerCon (grey)

~ 110-230 V / 16 A max. loop through connector

Presets

Flat

This setting provides a linear frequency response with a neutral sound characteristics. Standard setting for many applications.

High Boost

For use on long distances.

Boost

Similar to the „Flat“ preset, but with increased low end response.

Soft

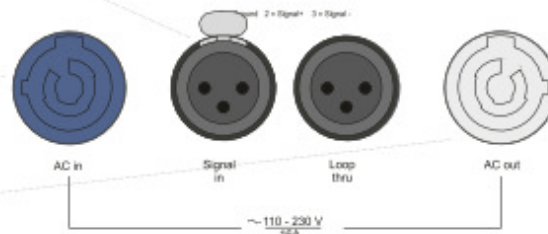
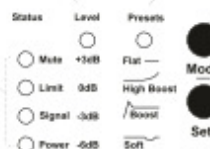
Reduces the level in the frequency range from 2.5 - 5 kHz, to which the ear is particularly sensitive. This setting is recommended for high level reproduction of highly compressed music tracks.

Mode - key

Switches between control modes Status, Level and Presets.

Set - key

Setting of various values and Mute on / off.





MultiRigg™

swiveling fastening solution for horizontal and vertical alignment, for flown / ground stacked / mounted applications, incl. accessories (2 x knurled screw M10 x 20 mm, 1 x handle screw M8 x 55 mm), max. load 50 kg

Order No. **01360**



Connector

K 20 -> K 20, max. load 75 kg incl. (black version: 6 x M10 x 18 mm star knob screws white version: 6 x M10 x 20 mm socket head screws)

Order No. **08157/set/w** (RAL 9010)
Order No. **08157/set**



Star Knob Screw

M10 x 18 mm

Order No. **08377**



Knurled Screw

M10 x 20 mm

Order No. **73750/w** (RAL 9010)
Order No. **73750**



Knurled Head Screw

reduction screw for fastening M10 Flange (08126).

Order No. **73755**



Flange

35 mm ø -> M10 x 16 mm, M8 x 20 star knob screw

Order No. **08126**



Steel Safety

8 mm x 600 mm, black, max. load 40 kg (BG1 810-3), quick connector undetachably

Order No. **01376/8**



Ring Screw

M10- DIN 580

Order No. **73700** (zincod)

Order No. **73700/sw** (black zincod)



TV Spigot

10 mm internal thread, 28 mm Ø

Order No. **08128**



Doughty Quick Trigger Clamp

max. load 250 kg

Order No. **01223**



ACCESSORIES K 20

Speaker Stand



K&M, incl. wind up,
height 138,5 to 218 cm,
max. load 50 kg

Order No. **03011**

Rain Cover



for K 20

Order No. **01253/RC**

Cover



for K 20, padded

Order No. **01253**

Flight Case



for 2 pcs. K 20 and accessories,
heavy duty, 9 mm birch multiplex,
PVC coated, 6 x recessed sprung
handles, 4 x butterfly catches,
4 x 100 mm blue wheels, 2 pcs. with
brake, inserts for accessories, interior
lined with felt.

Order No. **16031**

