

# High Power HiMid System - digitally powered **K 24 dp**



The self-powered high-performance top K 24 dp is suitable for all sound applications requiring a fast set-up, very high power reserves and a good sound. The 2 x 12"/ 1.4" combination weighs just 37 kg including the integrated flying hardware, can be hung one above the other for longer arrays and is extremely compact. The optional flying bracket is very simple to attach using the ball lock pin and can be adjusted to the desired angle. The high-quality low-noise two channel (bi-amp) DSP amplifier provides for a max. SPL of up to 140 dB.

## PRODUCT SPECIFICATIONS

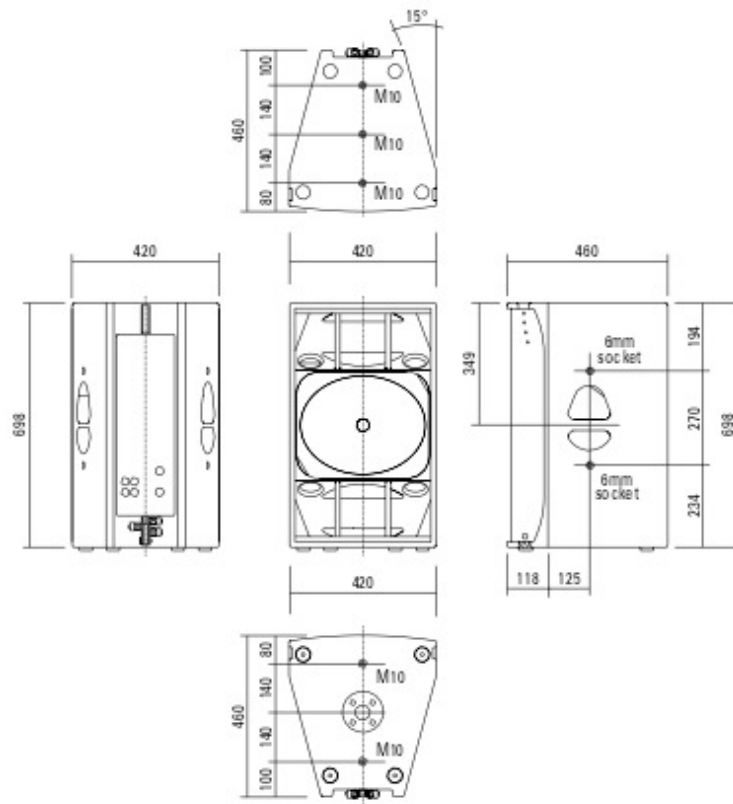
<b>Speaker Components</b>	2 x 12" Nd / 1.4" Nd
<b>Description</b>	High Power HiMid System
<b>Amp Power</b>	LF: 2400 W RMS / 110-230 V HF: 700 W RMS / 110-230 V
<b>Rated Current</b>	2.2 A @ 230 V
<b>SPL</b> Peak @ 1 m	140 dB
<b>Max. Input Signal</b>	25 dBu
<b>DSP</b>	HDLM FPGA Processing 32 bit floating point
<b>AD / DA</b>	24 bit / 96 kHz
<b>Latency</b>	0,8 ms (analog in to analog out)
<b>Usable Range</b> -6 dB	75 Hz - 19 kHz
<b>Tuning Frequency</b> excursion minimum	85 Hz
<b>X - Overpoint</b> acoustical	Depends on preset
<b>Coverage</b> horizontal / vertical	60° x 50° (60°-version) 90° x 50° (90°-version)
<b>Max. Splay Angle</b>	12°
<b>Connectors</b>	Neutrik XLR in/out Neutrik PowerCon in/out
<b>Handles</b>	2 x
<b>Rigging / Fittings</b>	5 x M10 / 4 x 6 mm socket Integrated flying hardware 35 mm pole mount
<b>Weight</b>	37,0 kg (+ 7,0 kg wheel board)
<b>Size</b> height x width x depth	70,0 x 42,0 x 46,0 cm
<b>Order No.</b>	<b>01029/dp/60°</b> (60°-version)



Control Panel of the K 24 dp.

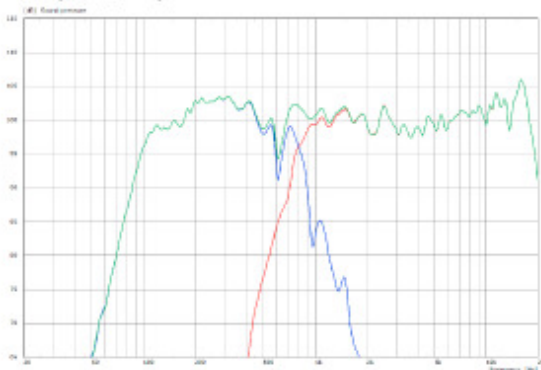


## DIMENSIONS

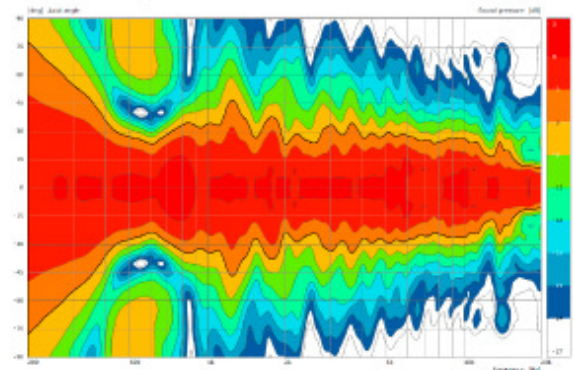


## MEASUREMENTS

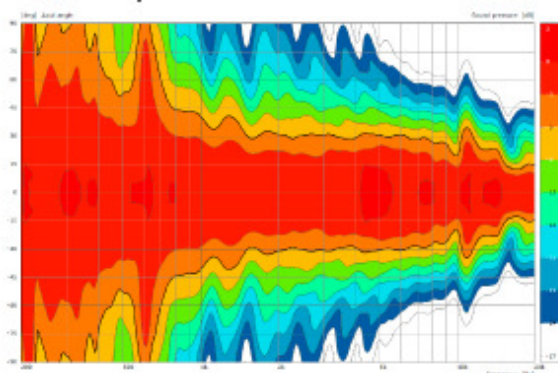
Frequency Response with Preset



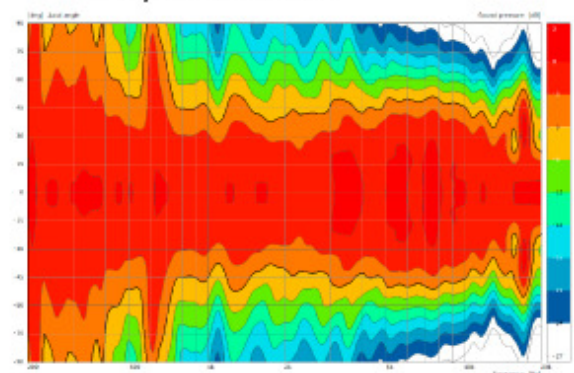
2D Directivity Plot - vertical



2D Directivity Plot - horizontal 60°



2D Directivity Plot - horizontal 90°



**The technical performance features of the K 24 and its exceptional compactness were only possible by means of a complex acoustic interplay between the individual components and their control systems.**

As a result, the performance characteristics and quality attributes were optimised to such a level that they are able to compete with and even surpass significantly larger systems.

To increase the degree of efficiency, the two 12" low-midrange speakers are initially directed into an acoustic bandpass and then into a hybrid horn. The symmetrical set-up ensures even and balanced coverage.

The generously dimensioned elliptical horn featuring a curved design for wide coverage ensures a highly accurate and long throw.

The cabinet is fitted with a sophisticated reinforcement system in order to prevent unwanted resonance.



K 24

The drivers are installed such that the voice coils are in the same vertical plane to ensure phase coherence even when using the passive crossover.



## APPLICATIONS



### The integrated Flying System.



The Flying Cradle – up to three K 24 systems can be flown vertically.



Simple interconnection of systems by means of integrated Spacer.



Spacer with "parking space" for the Ball Lock Pin.



Integrated Flying System with four adjustable *Splay* Angles.



Bracket.



**K 24 as Stack**  
with G Sub.

### Accessories.



Removable Wheel Board for simple transportation.



The Flying Bracket is very simple to attach using the Ball Lock Pin and can be adjusted to the desired angle.



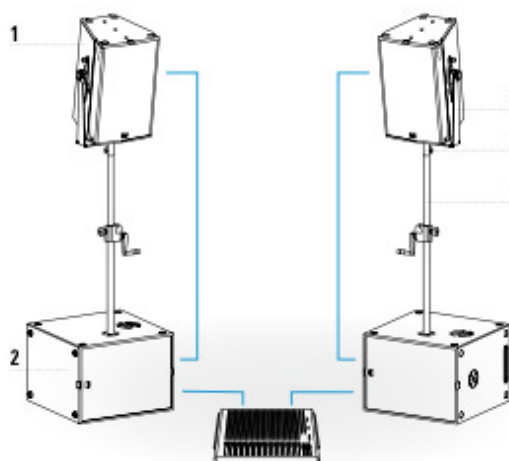
## COMPLETE SYSTEMS



### The K 24 System.

The K 24 dp not only performs well when used in the basic version, but can also be extended as desired to a larger system suitable for halls and open-air events.

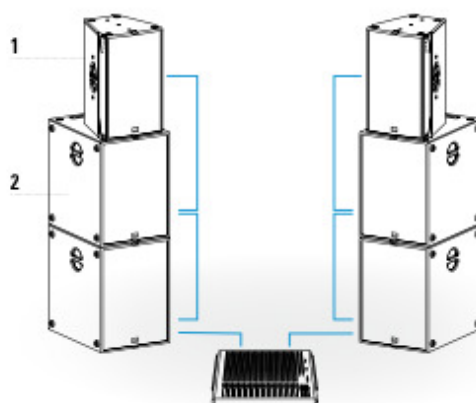
Whether you opt for the G Sub dp 1500 (1 x 18") with its low tuning frequency, for the more punchy sounding B 1502 dp (2 x 15") or for the direct radiating K Sub 1801 (1 x 18") is more or less a matter of taste. The system can be used flown or ground stacked and is easily extendable.



### Basic System

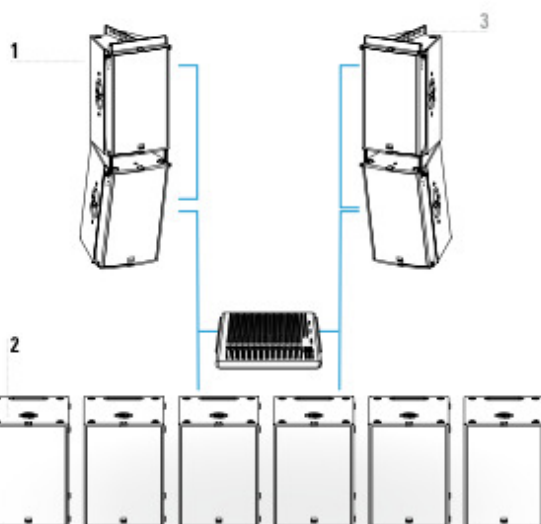
Components	Order No.
1 2 x K 24 dp	01029/dp
2 2 x K Sub 1801 dp Selfpowered version	01060/dp

Accessories	Order No.
3 Flying Bracket	01209/set
4 Flange	08127
5 Speaker Pole	03022



### Standard System

Components	Order No.
1 2 x K 24 dp	01029/dp
2 4 x K Sub 1801 dp Selfpowered version	01060/dp



### XL System

Components	Order No.
1 4 x K 24 dp	01029/dp
2 6 x K Sub 1801 dp Selfpowered version	01060/dp

Accessories	Order No.
3 2 x Flying Cradle	01355

The K 24 dp features integrated digital amplifier electronics with a DSP controller. Various factory-configured presets and volume settings can be selected.

High-grade electronic components from the industrial sector and a first-class circuit design ensure excellent audio quality

with low distortion and a minimal noise floor.

Highly efficient and "intelligent" limiter systems ensure optimum protection against overload, without restricting the possibilities offered by this high-performance sound system.

#### Level

Adjustment in 3 dB steps (-6 dB to +3 dB).

#### Status

##### Mute LED

Red light when the system is muted or under technically critical conditions.

##### Limit LED

Yellow light when the limiter is restricting the level.

##### Signal LED

Green light when the input signal exceeds -20 dBu.

##### Power LED

Green light when the system is switched on.

## K24dp

High Power HiMid System



Made in Germany  
www.seeburg.net



#### Serial No.:

Components	2x 12" Nd / 1,4" Nd
Input Impedance	10 kΩ
Power (peak)	LF: 2400 W HF: 700 W
Operation Voltage	Universal Mains: 85 - 260V (auto voltage auto selection)
Maximum SPL	140 dB @ 1m
Frequency Range	75 Hz - 19 kHz
Tuning Frequency	85 Hz
Coverage	60° x 50°
Weight	37 kg

#### Presets

##### Flat

This setting provides a linear frequency response with a neutral sound characteristics. Standard setting for many applications.

##### High Boost

For use on long distances.

##### Soft

Reduces the level in the frequency range from 2.5 - 5 kHz, to which the ear is particularly sensitive. This setting is recommended for high level reproduction of highly compressed music tracks.

##### Safe Limit

-3 dB reduction of the limiter threshold to avoid damage by misuse.

#### Mode - key

Switches between control modes: Status, Level and Presets.

#### Set - key

Setting of various values and Mute on / off.



PowerCon



Signal in



Loop thru



PowerCon

Loop thru

#### PowerCon (blue)

Power supply  
~ 110-230 V / 16 A max.

#### XLR

Symmetrical analog input  
max. input +25 dBu.  
Effective filter protection against HF interference and DC Voltages.  
Electronically balanced to prevent noise.

#### PowerCon (grey)

~ 110-230 V / 16 A max.  
loop through connector.

## Flying Cradle



for K 24,  
incl. (1 x 6 x 25 mm ball lock pin,  
1 x steel rope)

Order No. **01355**

## Flying Bracket



for K 24,  
incl. (4 x ball lock pins 6 x 18 mm,  
4 x steel ropes, 2 x handle screws  
M8 x 20 mm)

Order No. **01209/set**

## Handle Screw



M8 x 20 mm,  
adjustable

Order No. **08376**

## Ball Lock Pin



for K 24 (front), 6 x 18 mm

Order No. **01380/K24/grip 18 mm**

for K 24 (rear), 6 x 25 mm

Order No. **01380/K24/grip 25 mm**

## Flange



for Galeo S / G 3 / GL 16 / GL 24 /  
K 24 flying bracket,  
M20 x 35 mm with nut, incl. 1 x M20  
x 30 socket head screw, 1 x flat

Order No. **08127/nut**

## Quick Trigger TV Clamp



Max. load 200 kg

Order No. **01223/TV**

## Doughty Quick Trigger Clamp



max. load 250 kg

Order No. **01223/250 kg**

## TV Adapter



M20 external thread,  
28 mm Ø

Order No. **08128/M20**

## Ring Screw



M10– DIN 580

Order No. **73700** (zincd)

Order No. **73700/sw** (black zincd)

## Shackle



cambered, high-quality tempered,  
with bolt (ø 12 mm), weight: 0,14 kg,  
WLL 1000 kg

Order No. **01372/1000**

## Steel Safety



8 mm x 600 mm, black,  
max. load 40 kg (BG1 810-3),  
quick connector undetachably

Order No. **01376/8**



TV Adapter -> Flying Bracket

## ACCESSORIES K 24 dp



### Speaker Stand

K&M, incl. wind up,  
height 138,5 to 218 cm,  
max. load 50 kg,  
Order No. **03011**



### Horn 90° x 50°

for K 24, 90° x 50°  
Order No. **01598**



### Wheel Board

for K 24, stackable  
Order No. **01266**



### Flight Case

for 2 pcs. K 24 and accessories,  
heavy duty, 9 mm birch multiplex,  
PVC coated, 10 x recessed sprung  
handles, 4 x butterfly catches,  
4 x 100 mm blue wheels with brake,  
2 x scanner windows, inserts for  
accessories, interior lined with felt.  
Order No. **16030/K24+**



### Hybrid Cable System

PowerCon-PowerCon / XLR-XLR

2,5 m    Order No. **08462**  
5 m     Order No. **08464**  
10 m    Order No. **08466**  
15 m    Order No. **08468**



### Rain Cover

for K 24  
Order No. **01255/outdoor**



### Cover

for K 24 without wheel board  
Order No. **01255**



### Cover

for K 24 by using wheel board  
Order No. **01255/WB**



K 24 Flight Case.



Wheel Boards.