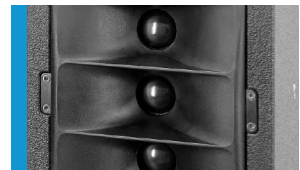




The TriSonus 10 loudspeaker system is specifically designed for use in combination with large-format video displays in applications where very high sound quality in combination with a long throw is required. The shallow depth and neutral appearance of the enclosure make the system easy to integrate in an installation. Individually manufactured fronts are available to match the loudspeakers to differently sized video displays. Fitted with two high excursion 5" chassis and three horn-loaded 1.1" tweeters, the system operates on the "3-source" principle to achieve high directivity in the vertical axis for increased throw combined with exceptionally smooth horizontal coverage. The integrated digital amplifier technology provides 280 W / 100 W AES and DSP control. A range of factory-configured presets and volume settings can be selected.

PRODUCT SPECIFICATIONS

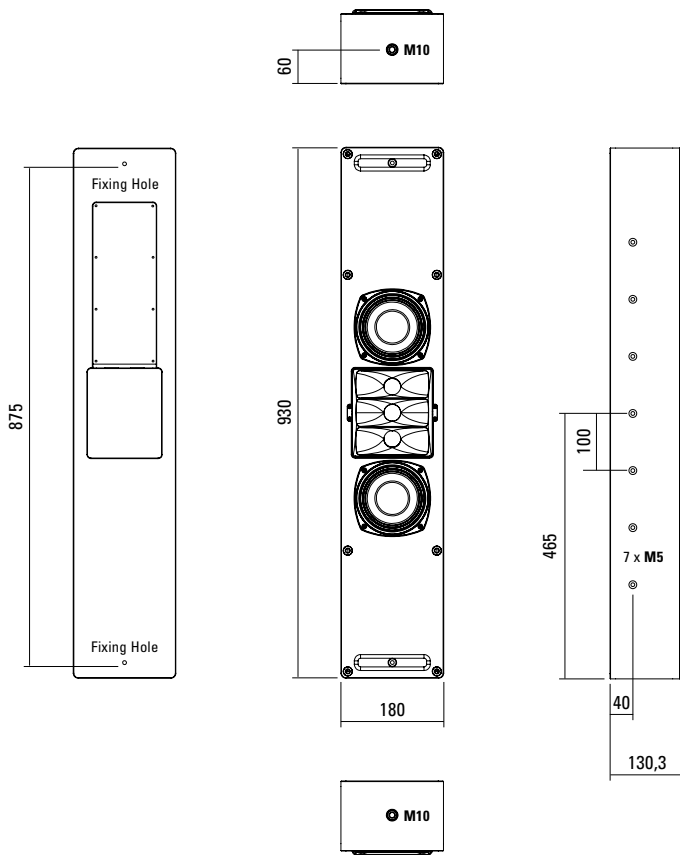
Speaker Components	2 x 5" Nd (1,5" VC) / 3 x 1" Nd (1,1" VC)
Description	Multi Media Column
Amp Power AES	LF: 280 W / HF: 100 W / 110-230 V
Rated Current	0,2 A @ 230 V
SPL Peak @ 1 m	118 dB
Max. Input Signal	25 dBu
DSP	HDLM FPGA Processing 32 bit floating point
AD / DA	24 bit / 96 kHz
Latency	0,8 ms (analog in to analog out)
Usable Range	50 Hz - 20 kHz (-6 dB)
Tuning Frequency excursion minimum	55 Hz
X - Overpoint acoustical	Depends on preset
Coverage horizontal / vertical	100° x 25°
Max. Splay Angle	- - -
Connectors	Neutrik XLR in Neutrik PowerCon in RJ45 (Ethercon)
Handles	- - -
Rigging / Fittings	2 x M10, 14 x M5, 2 x fixing holes
Weight	8,5 kg
Size height x width x depth	93,0 x 18,0 x 13,7 cm
Order No.	00120/dp



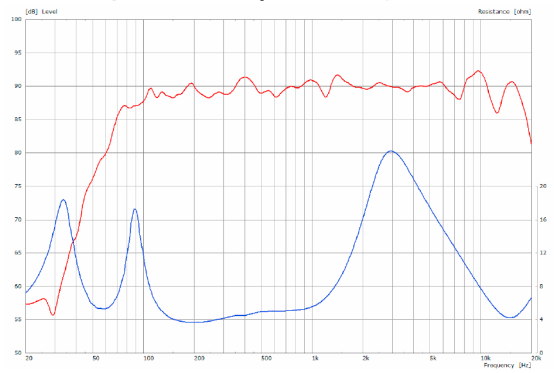
The tweeter unit can be tilted by +/- 10°.



DIMENSIONS

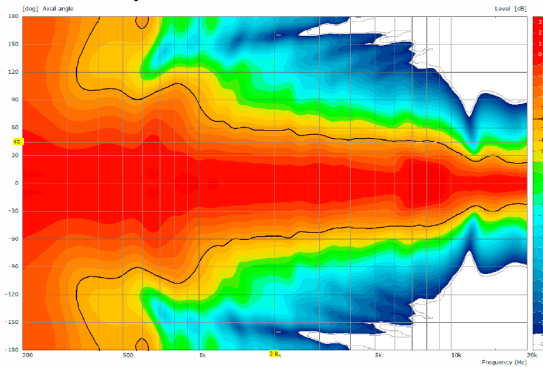


Sensitivity 1 W @ 1 m + Impedance (with passive crossover)

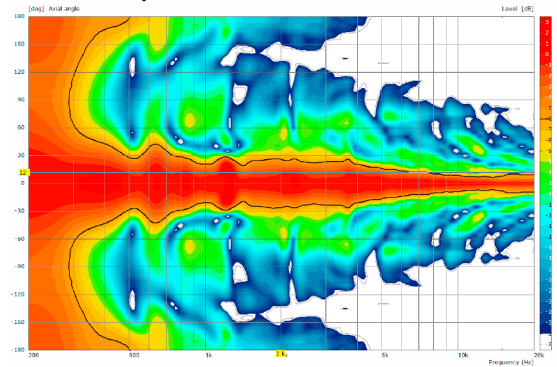


MEASUREMENTS

2D Directivity Plot - horizontal



2D Directivity Plot - vertical



The TriSonus dp features integrated digital amplifier electronics with a DSP controller. Various factory-configured presets and volume settings can be selected.

High-grade electronic components from the industrial sector and a first-class circuit design ensure excellent audio quality with low distortion and a minimal noise floor. Highly efficient and "intelligent" limiter systems ensure optimum protection against overload, without restricting the possibilities offered by this high-performance sound system.



Level
Adjustment in 3 dB steps (-12 dB to +6dB).

Status

Mute LED
Red light when the system is muted or under technically critical conditions.

Limit LED
Yellow light when the limiter is restricting the level.

Signal LED
Green light when the input signal exceeds -20 dBu

Power LED
Green light when the system is switched on.

Presets

Flat
This setting provides a linear frequency response with a neutral sound characteristics. Standard setting for many applications.

HP
Switches in a high pass filter for use in combination with a subwoofer.

Boost
The same neutral response as the „Flat“ setting, but with the addition of a bass boost.

Soft
Reduces the level in the frequency range from 2.5 - 5 kHz, to which the ear is particularly sensitive. This setting is recommended for high level reproduction of highly compressed music tracks.

Mode - key
Switches between control modes Status, Level and Presets.

Set - key
Setting of various values and Mute on / off.

XLR
Symmetrical analog input max. Input +25 dBu. Effective filter protection against HF interference and DC Voltages. Electronically balanced to prevent noise.

AES Network
Interface for remote control and audio transfer via ethernet.

PowerCon (blue)
Power supply ~ 110-230 V / 16 A max.

APPLICATIONS

Mounting on traverse



Wall Mounting



Mounting on wall

Invisible wall mounting by means of two screws, which are carried through the casing.



Mounting in wall



Fronts

Individually manufactured fronts are available to match the loudspeakers to differently sized video displays.