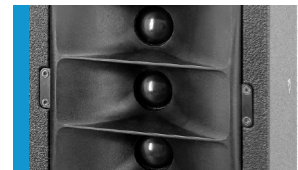




The TriSonus 10 loudspeaker system is specifically designed for use in combination with large-format video displays in applications where very high sound quality in combination with a long throw is required. The shallow depth and neutral appearance of the enclosure make the system easy to integrate in an installation. Individually manufactured fronts are available to match the loudspeakers to differently sized video displays. Fitted with two high excursion 5" chassis and three horn-loaded 1.1" tweeters, the system operates on the "3-source" principle to achieve high directivity in the vertical axis for increased throw combined with exceptionally smooth horizontal coverage.

## PRODUCT SPECIFICATIONS

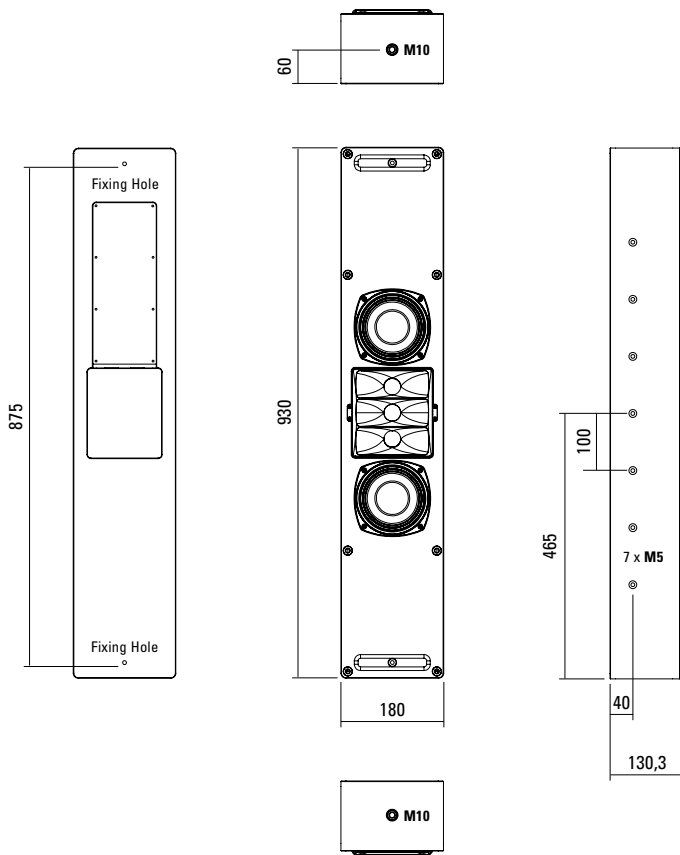
<b>Speaker Components</b>	2 x 5" / 3 x 1,1" ND
<b>Description</b>	Multi Media Column
<b>Power</b> AES / Peak	200 W / 600 W
<b>Impedance</b> nominal	4 Ω
<b>SPL</b> 1 W / Peak @ 1 m	90 dB / 118 dB
<b>Usable Range</b>	50 Hz - 20 kHz (-6 dB)
<b>Tuning Frequency</b> excursion minimum	55 Hz
<b>X - Overpoint</b> acoustical	1200 Hz
<b>Coverage</b> horizontal / vertical	100° x 25°
<b>Connectors</b>	2 x Neutrik Speakon Coding: 1 +/- = HiMid, 2 +/- = thru
<b>Rigging / Fittings</b>	2 x M10, 14 x M5, 2 x Fixing Holes
<b>Weight</b>	8,5 kg
<b>Size</b> height x width x depth	93,0 x 18,0 x 13,7 cm
<b>Order No.</b>	<b>00120</b>



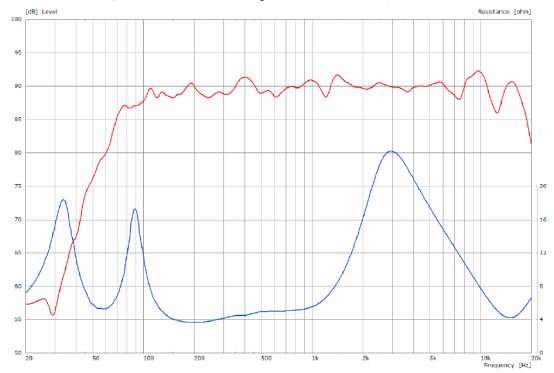
The tweeter unit can be tilted by +/- 10°.



## DIMENSIONS

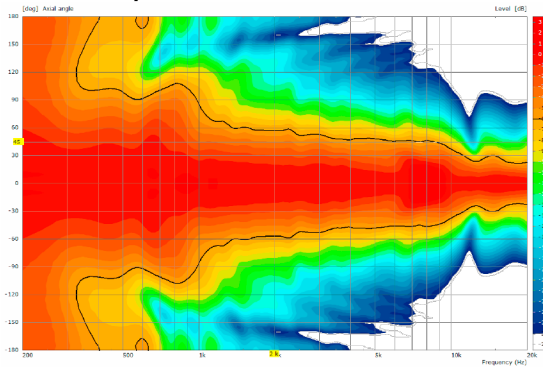


**Sensitivity 1 W @ 1 m + Impedance** (with passive crossover)

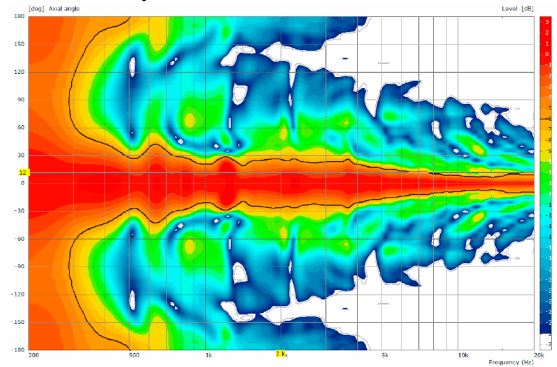


## MEASUREMENTS

**2D Directivity Plot - horizontal**



**2D Directivity Plot - vertical**



## APPLICATIONS

### Mounting on traverse



### Wall Mounting



#### Mounting on wall

Invisible wall mounting by means of two screws, which are carried through the casing.



#### Mounting in wall



#### Fronts

Individually manufactured fronts are available to match the loudspeakers to differently sized video displays.