



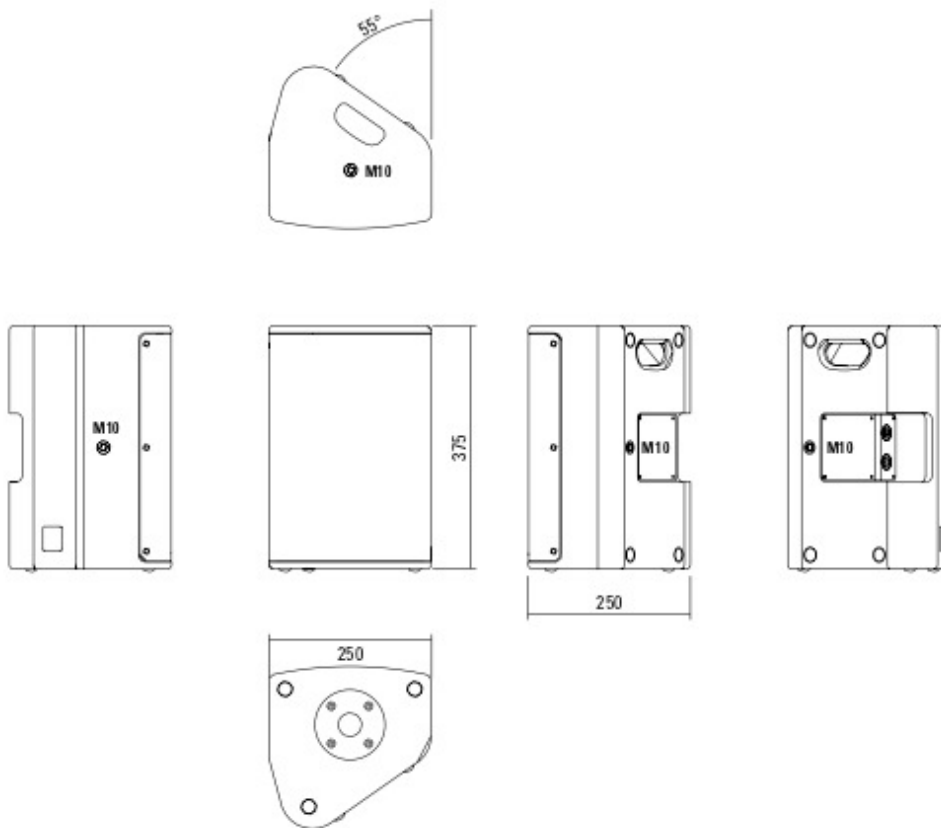
Multifunctional premium-class compact 2-way system. The coaxial configuration in combination with a carefully designed large-area horn ensures absolutely constant response even off the main axis. High-power Neodym drivers and long-excursion coils provide high efficiency and reduced distortion. Three M10 threaded mounting points are available to mount accessories for installation or mobile applications. The integrated digital amplifier technology provides 500 / 220 Watt AES and DSP control. A range of factory-configured presets and volume settings can be selected.

PRODUCT SPECIFICATIONS

Speaker Components	8" Nd (2,5" VC) / 1" Nd (1,7" VC)
Description	Multifunctional Coaxial Sound System
Amp Power <small>AES</small>	LF: 500 W / HF: 220 W / 110-230 V
Rated Current	0,4 A
SPL <small>Peak @ 1m</small>	124 dB
Max. Input Signal	25 dBu
DSP	HDLM FPGA Processing 32 bit floating point
AD / DA	24 bit / 96 kHz
Latency	0,8 ms (analog in to analog out)
Usable Range	70 Hz - 19 kHz (-6 dB)
Tuning Frequency <small>excursion minimum</small>	80 Hz
X - Overpoint <small>acoustical</small>	Depends on preset
Coverage <small>horizontal / vertical</small>	90° x 60° - rotatable
Max. Splay Angle	- - -
Connectors	Neutrik XLR in/ Ethercon/ Neutrik PowerCon in/
Handles	1 x
Rigging / Fittings	3 x M10 35 mm pole mount
Weight	8 kg
Size <small>height x width x depth</small>	37,5 x 25,0 x 25,0 cm
Order No.	01091/dp

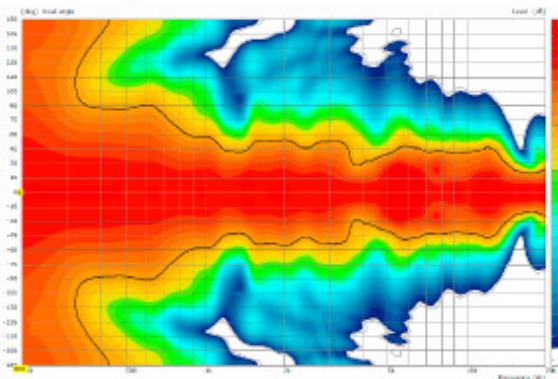


DIMENSIONS

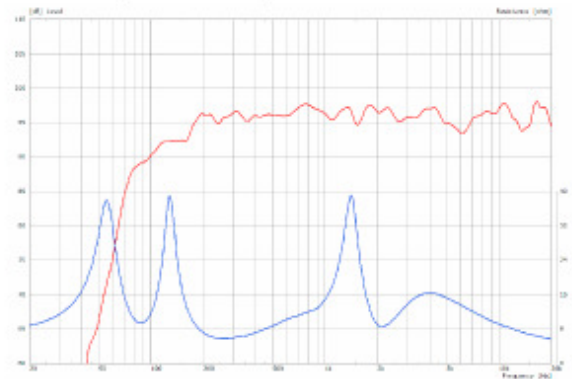


MEASUREMENTS

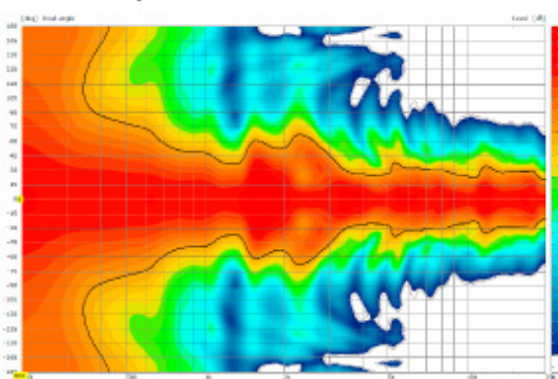
2D Directivity Plot - horizontal



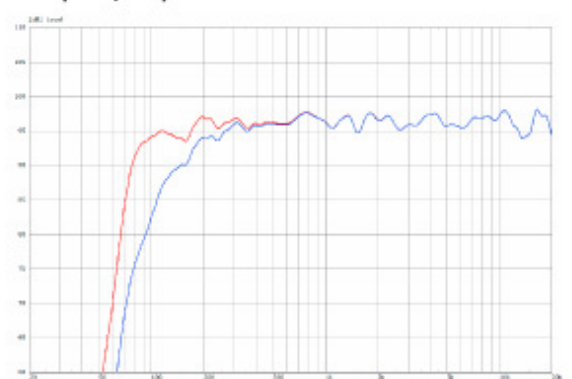
Sensitivity 1W @ 1 m + Impedance



2D Directivity Plot - vertical



Frequency Response with Presets



The X 2 dp features integrated digital amplifier electronics with a DSP controller. Various factory-configured presets and volume settings can be selected. High-grade electronic components from the industrial sector and a first-class circuit design ensure excellent

audio quality with low distortion and a minimal noise floor. Highly efficient and "intelligent" limiter systems ensure optimum protection against overload, without restricting the possibilities offered by this high-performance sound system.

Level
Adjustment in 3 dB steps (-12 dB to +6 dB).

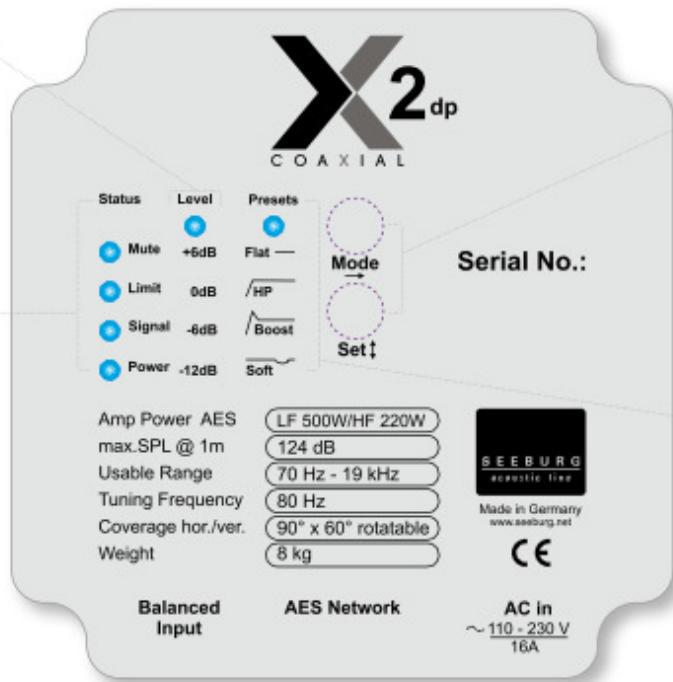
Status

Mute LED
Red light when the system is muted or under technically critical conditions.

Limit LED
Yellow light when the limiter is restricting the level.

Signal LED
Green light when the input signal exceeds -20 dBu

Power LED
Green light when the system is switched on.



Mode - key
Switches between control modes: Status, Level and Presets.

Set - key
Setting of various values and Mute on / off.

Presets

Flat
This setting provides a linear frequency response with a neutral sound characteristics. Standard setting for many applications.

HP
Switches in a high pass filter for use in combination with a subwoofer.

Boost
The same neutral response as the „Flat“ setting, but with the addition of a bass boost.

Soft
Reduces the level in the frequency range from 2.5 - 5 kHz, to which the ear is particularly sensitive. This setting is recommended for high level reproduction of highly compressed music tracks.

XLR
Symmetrical analog input max. Input +25 dBu. Effective filter protection against HF interference and DC Voltages. Electronically balanced to prevent noise.

AES Network
Interface for remote control and audio transfer via ethernet.

PowerCon (blue)
Power supply ~ 110-230 V / 16 A max.

Flying J-Bracket



for A 1 / GL 8 / X 1 / X 2 / TS Nano, horizontal and vertical alignment, incl. (white version: 1 x M10 x 20 socket head screws, black version: 1 x M10 x 20 adjustable handle screw)

Order No. **01212/J/set/w** (RAL 9010)
Order No. **01212/J/set**

Handle Screw



for flying brackets, adjustable
M10 x 20

Order No. **08375/20**

Flange



with ball and socket joint, with additional locking screw, M10 x 15, max. load 15 kg

Order No. **08125**

Flange



35 mm Ø → M10

Order No. **08126**

Truss Clamp



incl. M10 Adapter, max. load 15 kg

Order No. **01221**

Doughty Quick Trigger Clamp



max. load 100 kg

Order No. **01223/100 kg**

Ring Screw



M10–DIN 580

Order No. **73700** (zincod)

Order No. **73700/sw** (black zincod)

Steel Safety



4 mm x 600 mm, black, max. load 10 kg (BGI 810-3), quick connector undetachably

Order No. **01376/4**



ACCESSORIES X 2 dp

Wall Mount



ball and socket joint flange (08125)
+ 08125/plate

Order No. **08125/set**

Wall Mount



M10, max. load 15 kg,
for permanent installation,
incl. tilt angle stop

Order No. **08131/F**

Order No. **08131/F/w** (RAL 9010)

Wall Mount



with tilt unit, max. load 40 kg

Order No. **08130**

Wall Mount



for U-brackets, max. load 40 kg,
incl. screws
(M10 x 70 mm socket head screw,
M10 hex lock nut and flat washer)

for 8"-12" speakers

Order No. **08130/F/269**

Order No. **08130/F/269/w** (RAL 9010)

Hybrid Cable System



PowerCon-PowerCon / XLR-XLR

2,5 m Order No. **08462**

5 m Order No. **08464**

10 m Order No. **08466**

15 m Order No. **08468**

Bag



for 2 x X 2 / 2 x TSM 8, padded
with pocket for accessories

Order No. **01245**

Flight Case Trunk



for 4 pcs. X 2, 4 x partition walls for
X 2 + accessories, heavy duty, 9 mm
birch multiplex, PVC coated black,
6 x recessed sprung handles, 2 x large
butterfly catches, 4 x 100 mm blue
wheels (2 pcs. with brake), interior
lined with felt, 29 kg

Size (H x W x D): 58 x 74 x 60 cm

Order No. **16555/4**



Flight Case