

**X<sup>2</sup>**  
COAXIAL



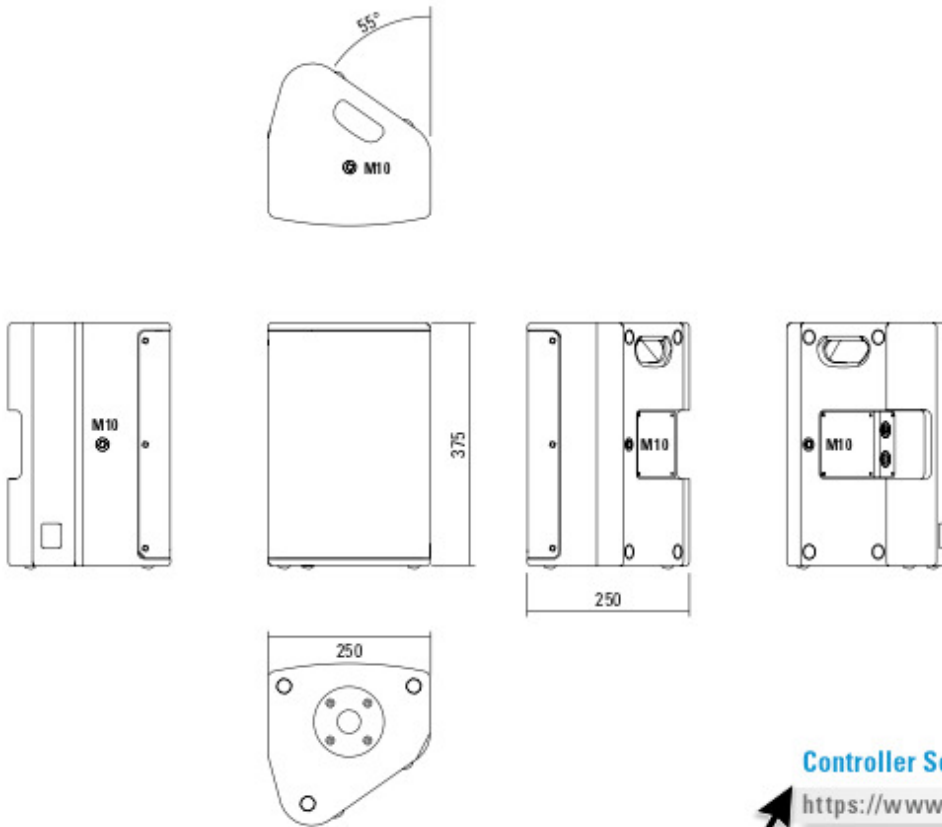
**Multifunctional premium-class compact 2-way system. The coaxial configuration in combination with a carefully designed large-area horn ensures absolutely constant response even off the main axis. High-power Neodym drivers and long-excursion coils provide high efficiency and reduced distortion. Three M10 threaded mounting points are available to mount accessories for installation or mobile applications.**

## PRODUCT SPECIFICATIONS

<b>Speaker Components</b>	8" Nd (2,5" VC) / 1" Nd (1,7" VC)
<b>Description</b>	Multifunctional Coaxial Sound System
<b>Power</b> AES / Peak	250 W / 750 W
<b>Impedance</b> nominal	8 Ω
<b>SPL</b> 1 W / Peak @ 1 m	95 dB / 124 dB
<b>Usable Range</b>	70 Hz - 19 kHz (-6 dB)
<b>Tuning Frequency</b> Excursion minimum	80 Hz
<b>X - Overpoint</b> acoustical	1,6 kHz
<b>Coverage</b> horizontal / vertical	90° x 60° - rotatable
<b>Connectors</b>	2 x Neutrik Speakon NL4MP in/out Coding: 1 +/- HiMid, 2 +/- loop thru
<b>Handles</b>	1 x
<b>Rigging / Fittings</b>	3 x M10 35 mm pole mount
<b>Weight</b>	8 kg
<b>Size</b> height x width x depth	37,5 x 25,0 x 25,0 cm
<b>Order No.</b>	<b>01091</b>



## DIMENSIONS

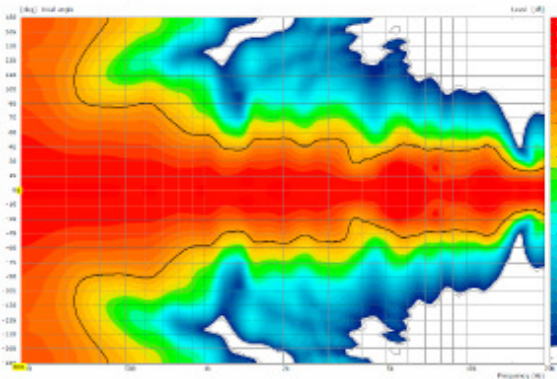


### Controller Setups:

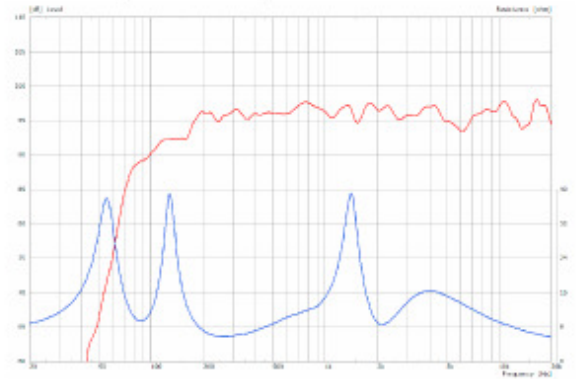
<https://www.seeburg.net/en/downloads>

## MEASUREMENTS

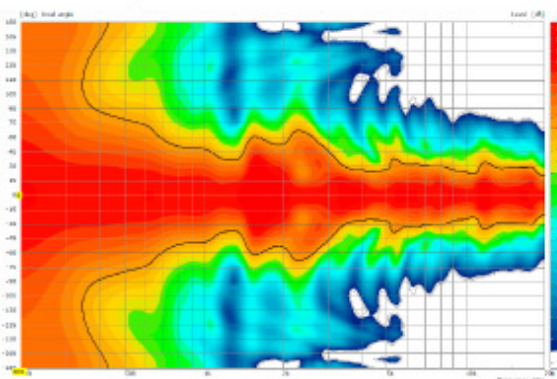
### 2D Directivity Plot - horizontal



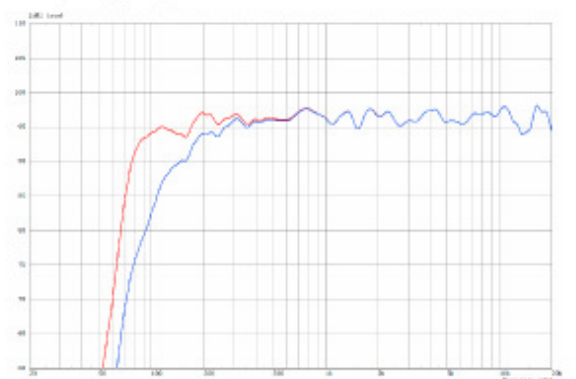
### Sensitivity 1W @ 1 m + Impedance



### 2D Directivity Plot - vertical



### Frequency Response with Presets



**Flying J-Bracket**



for A 1 / GL 8 / X 1 / X 2 / TS Nano, horizontal and vertical alignment, incl. (white version: 1 x M10 x 20 socket head screws, black version: 1 x M10 x 20 adjustable handle screw)

Order No. **01212/J/set/w** (RAL 9010)  
Order No. **01212/J/set**

**Handle Screw**



for flying brackets, adjustable  
M10 x 20

Order No. **08375/20**

**Flange**



with ball and socket joint, with additional locking screw, M10 x 15, max. load 15 kg

Order No. **08125**

**Flange**



35 mm Ø → M10

Order No. **08126**

**Truss Clamp**



incl. M10 Adapter, max. load 15 kg

Order No. **01221**

**Doughty Quick Trigger Clamp**



max. load 100 kg

Order No. **01223/100 kg**

**Ring Screw**



M10–DIN 580

Order No. **73700** (zincod)

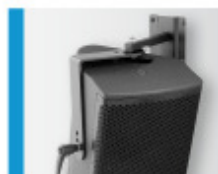
Order No. **73700/sw** (black zincod)

**Steel Safety**



4 mm x 600 mm, black, max. load 10 kg (BGI 810-3), quick connector undetachably

Order No. **01376/4**



## ACCESSORIES X 2

### Wall Mount



ball and socket joint flange (08125)  
+ 08125/plate

Order No. **08125/set**

### Wall Mount



M10, max. load 15 kg,  
for permanent installation,  
incl. tilt angle stop

Order No. **08131/F**

Order No. **08131/F/w** (RAL 9010)

### Wall Mount



with tilt unit, max. load 40 kg

Order No. **08130**

### Wall Mount



for U-brackets, max. load 40 kg,  
incl. screws  
(M10 x 70 mm socket head screw,  
M10 hex lock nut and flat washer)

for 8"-12" speakers

Order No. **08130/F/269**

Order No. **08130/F/269/w** (RAL 9010)

### Bag



for 2 x X 2 / 2 x TSM 8, padded  
with pocket for accessories

Order No. **01245**

### Flight Case Trunk



for 4 pcs. X 2, 4 x partition walls for  
X 2 + accessories, heavy duty, 9 mm  
birch multiplex, PVC coated black,  
6 x recessed sprung handles, 2 x large  
butterfly catches, 4 x 100 mm blue  
wheels (2 pcs. with brake), interior  
lined with felt, 29 kg

Size (H x W x D): 58 x 74 x 60 cm

Order No. **16555/4**



Flight Case