

Multifunctional Coaxial Sound System - digitally powered **X6 dp**



Multifunctional premium-class compact 2-way system. The coaxial configuration in combination with a carefully designed large-area horn ensures absolutely constant response even off the main axis. High-power Neodym drivers and long-excursion coils provide high efficiency and reduced distortion. Nine M10 threaded mounting points are available to mount MultiRigg hardware and other accessories for installation or mobile applications. The integrated digital amplifier technology provides 1500 / 400 W AES and DSP control. A range of factory-configured presets and volume settings can be selected.

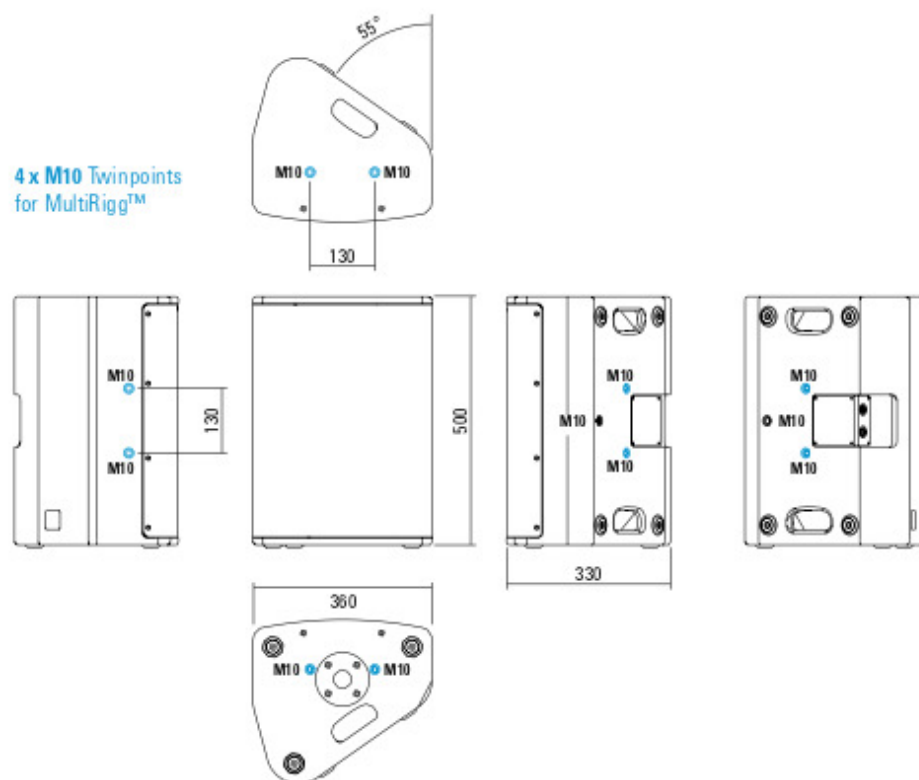
PRODUCT SPECIFICATIONS

Speaker Components	12" Nd (3,5" VC) / 1,4" Nd (3" VC)
Description	Multifunctional Coaxial Sound System
Amp Power AES	LF: 1500 W / HF: 400 W / 110-230 V
Rated Current	0,7 A
SPL Peak @ 1 m	131 dB
Max. Input Signal	25 dBu
DSP	HDLM FPGA Processing 32 bit floating point
AD / DA	24 bit / 96 kHz
Latency	0,8 ms (ana log in to analog out)
Usable Range	55 Hz - 18 kHz (-6 dB)
Tuning Frequency excursion minimum	65 Hz
X - Overpoint acoustical	Depends on preset
Coverage horizontal / vertical	80° x 60° - rotatable
Max. Splay Angle	- - -
Connectors	Neutrik XLR in/ Ethercon/ Neutrik PowerCon in/
Handles	2 x
Rigging / Fittings	9 x M10 To be used with MultiRigg™ 35 mm pole mount
Weight	18,5 kg
Size height x width x depth	50,0 x 36,0 x 33,0 cm
Order No.	01095/dp



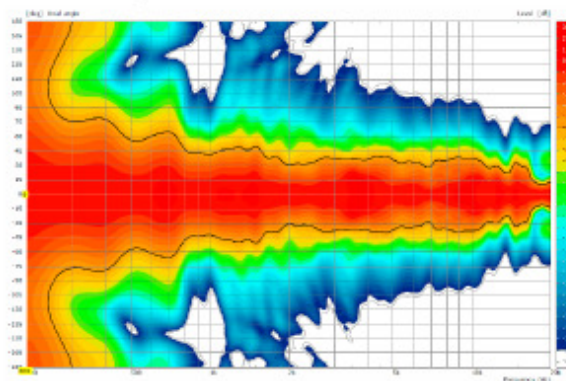
DIMENSIONS

4 x M10 Twinpoints
for MultiRigg™

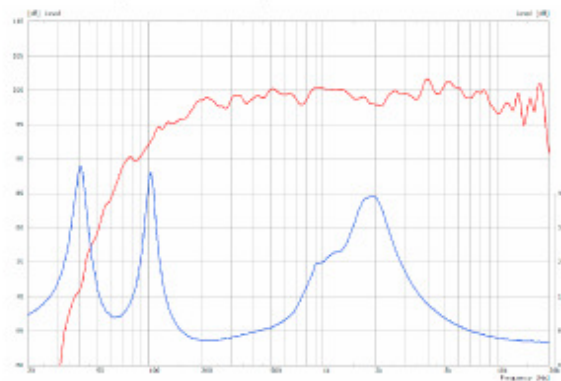


MEASUREMENTS

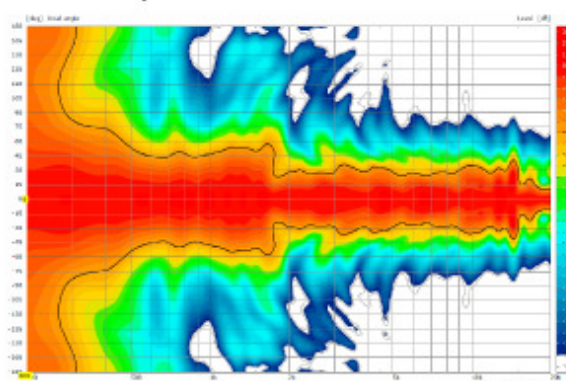
2D Directivity Plot - horizontal



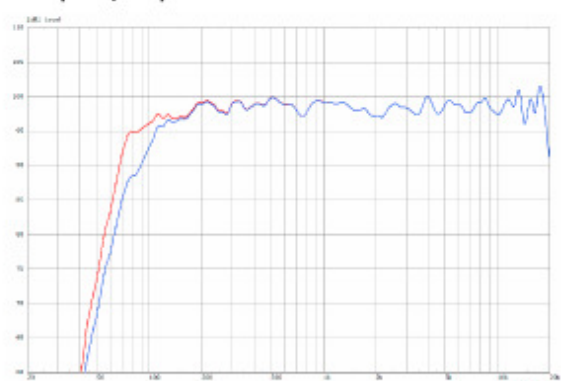
Sensitivity 1 W @ 1 m + Impedance



2D Directivity Plot - vertical



Frequency Response with Presets



The X 6 dp features integrated digital amplifier electronics with a DSP controller. Various factory-configured presets and volume settings can be selected. High-grade electronic components from the industrial sector and a first-class circuit design ensure excellent

audio quality with low distortion and a minimal noise floor. Highly efficient and "intelligent" limiter systems ensure optimum protection against overload, without restricting the possibilities offered by this high-performance sound system.

Level

Adjustment in 3 dB steps (-12 dB to +6 dB).

Status

Mute LED

Red light when the system is muted or under technically critical conditions.

Limit LED

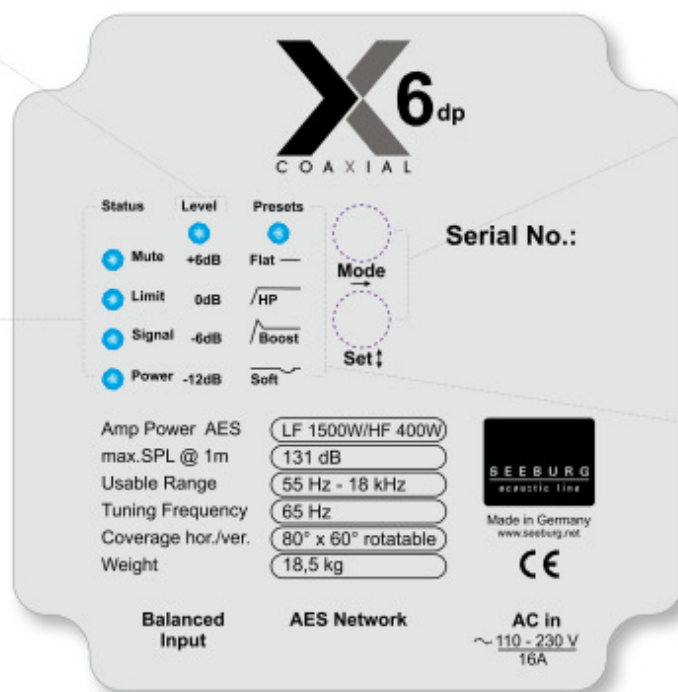
Yellow light when the limiter is restricting the level.

Signal LED

Green light when the input signal exceeds -20 dBu

Power LED

Green light when the system is switched on.



Mode - key

Switches between control modes: Status, Level and Presets.

Set - key

Setting of various values and Mute on / off.

Presets

Flat

This setting provides a linear frequency response with a neutral sound characteristics. Standard setting for many applications.

HP

Switches in a high pass filter for use in combination with a subwoofer.

Boost

The same neutral response as the „Flat“ setting, but with the addition of a bass boost.

Soft

Reduces the level in the frequency range from 2.5 - 5 kHz, to which the ear is particularly sensitive. This setting is recommended for high level reproduction of highly compressed music tracks.

XLR

Symmetrical analog input max. Input +25 dBu. Effective filter protection against HF interference and DC Voltages. Electronically balanced to prevent noise.

AES Network

Interface for remote control and audio transfer via ethernet.

PowerCon (blue)

Power supply ~ 110-230 V / 16 A max.

MultiRigg™



swiveling fastening solution
for horizontal and vertical alignment,
for flown / ground stacked / mounted
applications, incl. accessories
(2 x knurled screw M10 x 20 mm,
1 x handle screw M8 x 55 mm),
max. load 50 kg

Order No. **01360**

Flange



35 mm ø → M10 x 16 mm,
M8 x 20 star knob screw

Order No. **08126**

Knurled Screw



M10 x 20 mm

Order No. **73750**

Order No. **73750/w** (RAL 9010)

Knurled Head Screw



reduction screw for fastening
M10 Flange (08126).

Order No. **73755**

Steel Safety



6 mm x 600 mm, black,
max. load 22 kg (BGI 810-3),
quick connector undetachably

Order No. **01376/6**

TV Spigot



10 mm internal thread,
28 mm Ø

Order No. **08128**

Ring Screw



M10–DIN 580

Order No. **73700** (zincd)

Order No. **73700/sw** (black zincd)

Doughty Quick Trigger Clamp



max. load 100 kg

Order No. **01223/100 kg**



ACCESSORIES X 6 dp

Wall Mount

with tilt unit, max. load 40 kg

Order No. **08130**



Wall Mount

for U-brackets, max. load 40 kg,
incl. (M10 x 70 mm socket head screw,
M10 hex lock nut and flat washer)

for 8"-12" speakers

Order No. **08130/F/269/w** (RAL 9010)

Order No. **08130/F/269**



Hybrid Cable System

PowerCon-PowerCon / XLR-XLR

2,5 m Order No. **08462**

5 m Order No. **08464**

10 m Order No. **08466**

15 m Order No. **08468**



Cover

for X 6,
padded

Order No. **01225/X6**



Rain Cover

for X 6,
with zipper

Order No. **01225/X6/outdoor**



Flight Case

for 2 pcs. X 6 and 2 pcs. MultiRigg,
partition walls, heavy duty, 9 mm
birch multiplex, PVC coated black, 6 x
recessed sprung handles, 2 x butterfly
catches, 4 x 100 mm blue wheels (2
pcs. with brake), interior lined with felt
Size (H x W x D): 68,6 x 61,5 x 65,5 cm

Order No. **16565**



Rain Cover