

X6
COAXIAL



Multifunctional premium-class compact 2-way system. The coaxial configuration in combination with a carefully designed large-area horn ensures absolutely constant response even off the main axis. High-power Neodymium drivers and long-excursion coils provide high efficiency and reduced distortion. Nine M10 threaded mounting points are available to mount MultiRigg hardware and other accessories for installation or mobile applications.

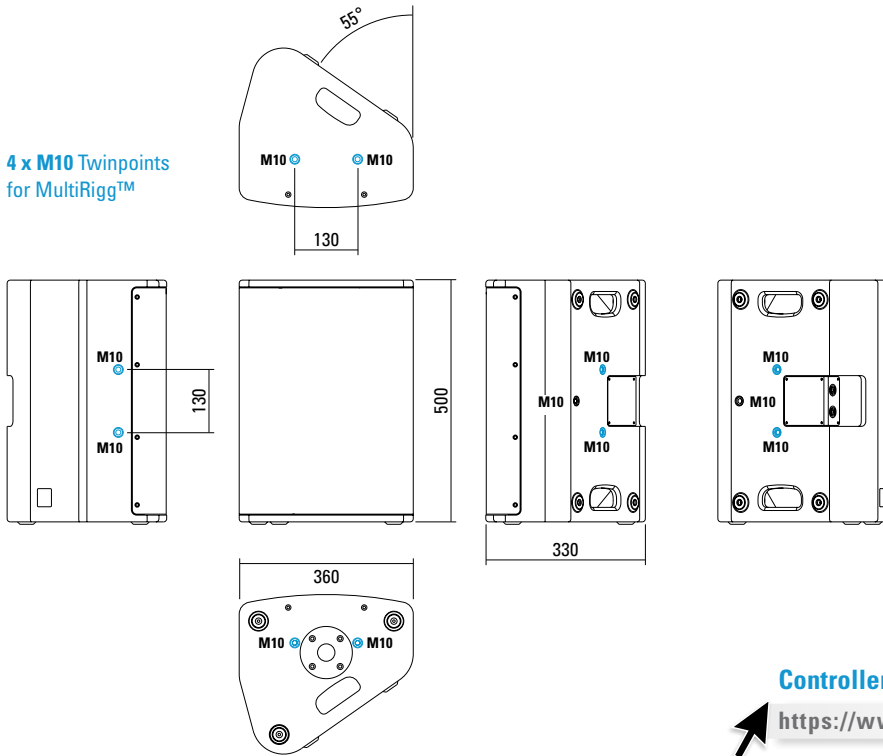
PRODUCT SPECIFICATIONS

Speaker Components	12" Nd (3,5" VC) / 1,4" Nd (3" VC)
Description	Multifunctional Coaxial Sound System
Power AES / Peak	500 W / 1500 W
Impedance nominal	8 Ω
SPL 1 W / Peak @ 1 m	99 dB / 131 dB
Usable Range	55 Hz - 18 kHz (-6 dB)
Tuning Frequency excursion minimum	65 Hz
X - Overpoint acoustical	1 kHz
Coverage horizontal / vertical	80° x 60° - rotatable
Connectors	2 x Neutrik Speakon NL4MP in/out Coding: 1 +/- HiMid, 2 +/- loop thru
Handles	2 x
Rigging / Fittings	9 x M10 To be used with MultiRigg 35 mm pole mount
Weight	18,5 kg
Size height x width x depth	50,0 x 36,0 x 33,0 cm
Order No.	01095



DIMENSIONS

4 x M10 Twinpoints
for MultiRig™

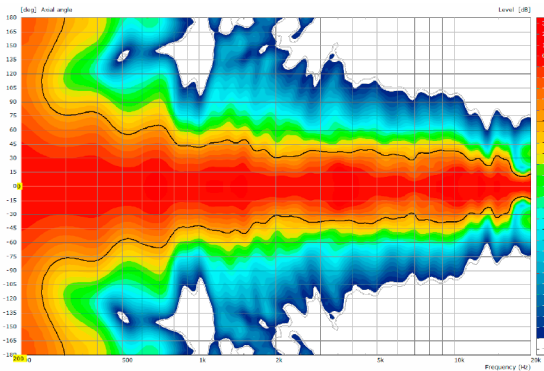


Controller Setups:

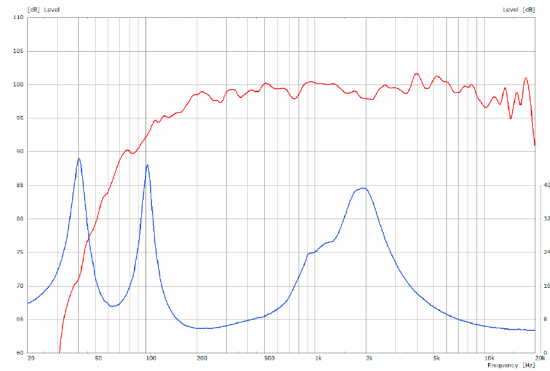
<https://www.seeburg.net/en/downloads>

MEASUREMENTS

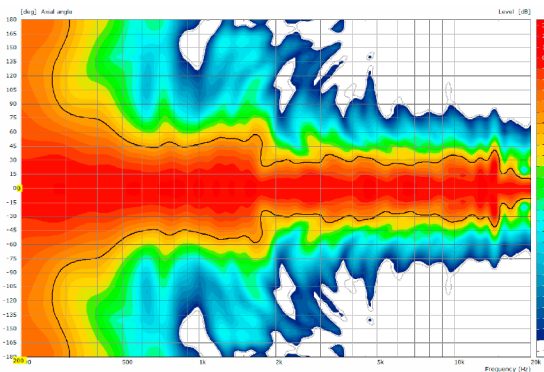
2D Directivity Plot - horizontal



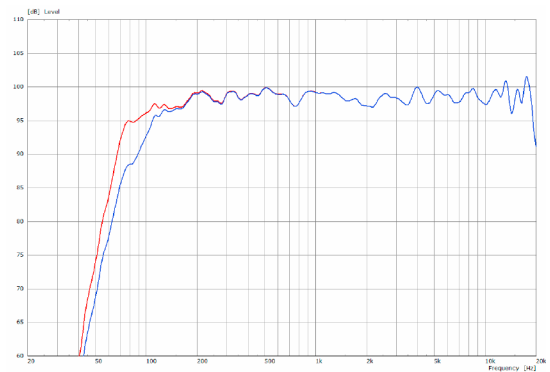
Sensitivity 1 W @ 1 m + Impedance



2D Directivity Plot - vertical



Frequency Response with Presets



MultiRigg™



swiveling fastening solution for horizontal and vertical alignment, for flown / ground stacked / mounted applications, incl. accessories (2 x knurled screw M10 x 20 mm, 1 x handle screw M8 x 55 mm), max. load 50 kg
Order No. **01360**

Steel Safety



6 mm x 600 mm, black, max. load 22 kg (BGI 810-3), quick connector undetachably
Order No. **01376/6**

Flange



35 mm \varnothing → M10 x 16 mm, M8 x 20 star knob screw
Order No. **08126**

TV Spigot



10 mm internal thread, 28 mm \varnothing
Order No. **08128**

Knurled Screw



M10 x 20 mm
Order No. **73750**
Order No. **73750/w** (RAL 9010)

Ring Screw



M10– DIN 580
Order No. **73700** (zincned)
Order No. **73700/sw** (black zincned)

Knurled Head Screw

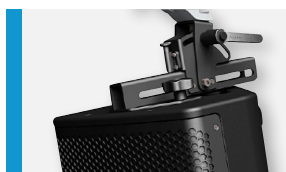


reduction screw for fastening M10 Flange (08126).
Order No. **73755**

Doughty Quick Trigger Clamp



max. load 100 kg
Order No. **01223/100 kg**



ACCESSORIES X 6

Wall Mount

with tilt unit, max. load 40 kg
Order No. **08130**



Wall Mount

for U-brackets, max. load 40 kg,
incl. (M10 x 70 mm socket head screw,
M10 hex lock nut and flat washer)
for 8"-12" speakers
Order No. **08130/F/269/w** (RAL 9010)
Order No. **08130/F/269**



Cover

for X 6,
padded
Order No. **01225/X6**



Rain Cover

for X 6,
with zipper
Order No. **01225/X6/outdoor**



Flight Case

for 2 pcs. X 6 and 2 pcs. MultiRigg,
partition walls, heavy duty, 9 mm
birch multiplex, PVC coated black, 6 x
recessed sprung handles, 2 x butterfly
catches, 4 x 100 mm blue wheels (2
pcs. with brake), interior lined with felt
Size (H x W x D): 68,6 x 61,5 x 65,5 cm
Order No. **16565**



Rain Cover