



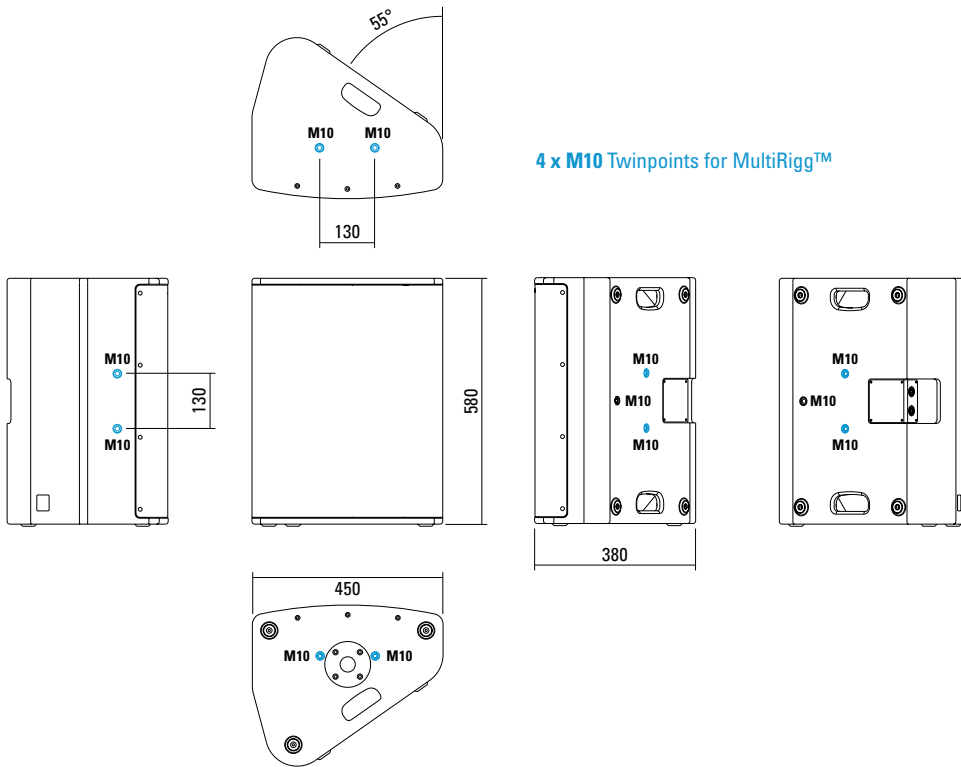
Multifunctional premium-class compact 2-way system. The coaxial configuration in combination with a carefully designed large-area horn ensures absolutely constant response even off the main axis. High-power Neodym drivers and long-excursion coils provide high efficiency and reduced distortion. Nine M10 threaded mounting points are available to mount MultiRigg hardware and other accessories for installation or mobile applications. The integrated digital amplifier technology provides 1500 / 400 W AES and DSP control. A range of factory-configured presets and volume settings can be selected.

PRODUCT SPECIFICATIONS

| | |
|---|---|
| Speaker Components | 15" Nd (3,5" VC) 1,4" Nd Compression Driver (3" VC) |
| Description | Multifunctional Coaxial Sound System |
| Amp Power AES | LF: 1500 W / HF: 400 W / 110-230 V |
| Rated Current | 0,7 A |
| SPL Peak @ 1 m | 134 dB |
| Max. Input Signal | 25 dBu |
| DSP | HDLM FPGA Processing 32 bit floating point |
| AD / DA | 24 bit / 96 kHz |
| Latency | 0,8 ms (analog in to analog out) |
| Usable Range | 50 Hz - 18 kHz (-6 dB) |
| Tuning Frequency excursion minimum | 60 Hz |
| X - Overpoint acoustical | Depends on preset |
| Coverage horizontal / vertical | 80° x 60° - rotatable |
| Max. Splay Angle | - - - |
| Connectors | Neutrik XLR in/ Ethercon/ Neutrik PowerCon in/ |
| Handles | 2 x |
| Rigging / Fittings | 9 x M10 To be used with MultiRigg™ 35 mm pole mount |
| Weight | 22,5 kg |
| Size height x width x depth | 58,0 x 45,0 x 38,0 cm |
| Order No. | 01097/dp |



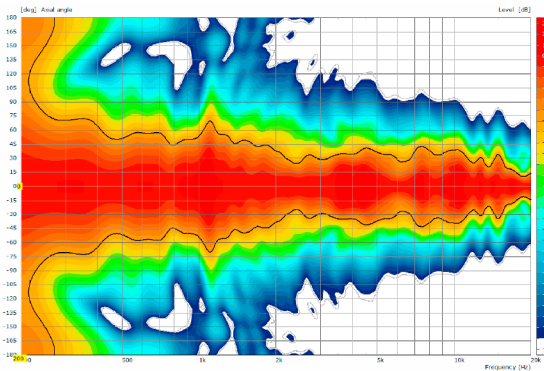
DIMENSIONS



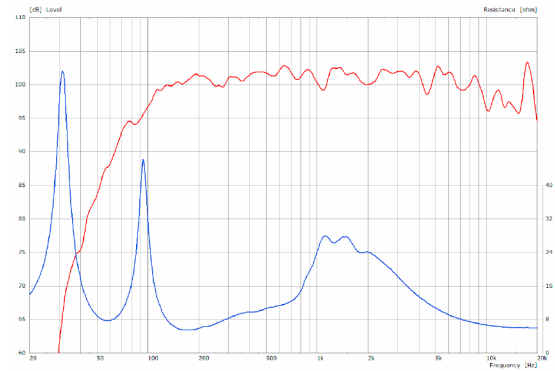
4 x M10 Twinpoints for MultiRigg™

MEASUREMENTS

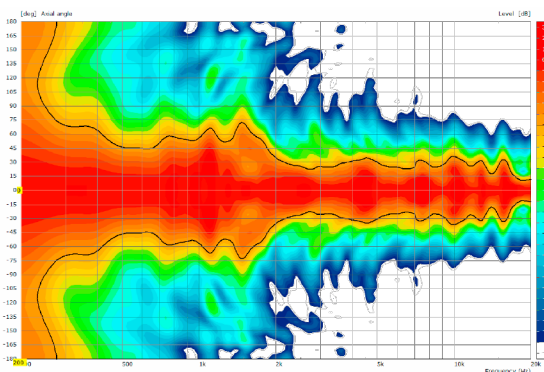
2D Directivity Plot - horizontal



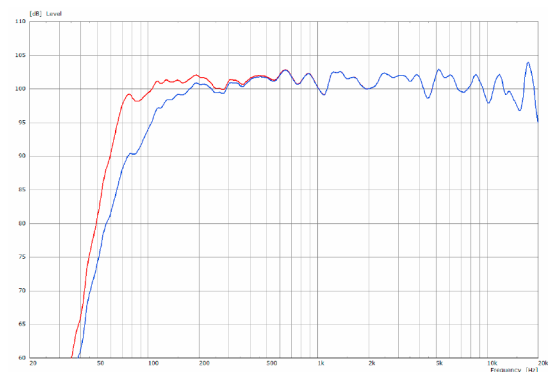
Sensitivity 1 W @ 1 m + Impedance



2D Directivity Plot - vertical



Frequency Response with Presets



The X 8 dp features integrated digital amplifier electronics with a DSP controller. Various factory-configured presets and volume settings can be selected.

High-grade electronic components from the industrial sector and a first-class circuit design ensure excellent

audio quality with low distortion and a minimal noise floor. Highly efficient and “intelligent” limiter systems ensure optimum protection against overload, without restricting the possibilities offered by this high-performance sound system.

Level
Adjustment in 3 dB steps (-12 dB to +6 dB).

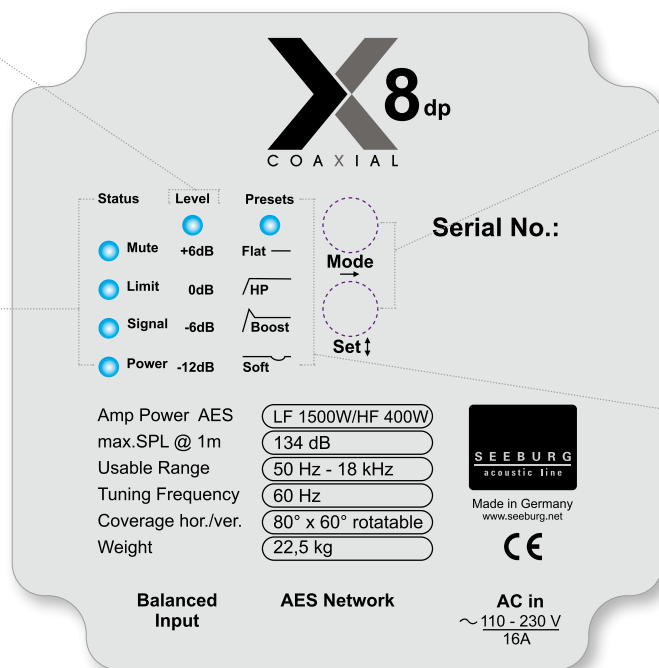
Status

Mute LED
Red light when the system is muted or under technically critical conditions.

Limit LED
Yellow light when the limiter is restricting the level.

Signal LED
Green light when the input signal exceeds -20 dBu

Power LED
Green light when the system is switched on.



Mode - key
Switches between control modes: Status, Level and Presets.

Set - key
Setting of various values and Mute on / off.

Presets

Flat
This setting provides a linear frequency response with a neutral sound characteristics. Standard setting for many applications.

HP
Switches in a high pass filter for use in combination with a subwoofer.

Boost
The same neutral response as the „Flat“ setting, but with the addition of a bass boost.

Soft
Reduces the level in the frequency range from 2.5 - 5 kHz, to which the ear is particularly sensitive. This setting is recommended for high level reproduction of highly compressed music tracks.

XLR
Symmetrical analog input max. Input +25 dBu. Effective filter protection against HF interference and DC Voltages. Electronically balanced to prevent noise.

AES Network
Interface for remote control and audio transfer via ethernet.

PowerCon (blue)
Power supply ~ 110-230 V / 16 A max.

MultiRigg™



swiveling fastening solution for horizontal and vertical alignment, for flown / ground stacked / mounted applications, incl. accessories (2 x knurled screw M10 x 20 mm, 1 x handle screw M8 x 55 mm), max. load 50 kg
Order No. **01360**

Steel Safety



6 mm x 600 mm, black, max. load 22 kg (BGI 810-3), quick connector undetachably
Order No. **01376/6**

Flange



35 mm \varnothing → M10 x 16 mm, M8 x 20 star knob screw
Order No. **08126**

TV Spigot



10 mm internal thread, 28 mm \varnothing
Order No. **08128**

Knurled Screw



M10 x 20 mm
Order No. **73750**
Order No. **73750/w** (RAL 9010)

Ring Screw



M10– DIN 580
Order No. **73700** (zincned)
Order No. **73700/sw** (black zincned)

Knurled Head Screw



reduction screw for fastening M10 Flange (08126).
Order No. **73755**

Doughty Quick Trigger Clamp



max. load 100 kg
Order No. **01223/100 kg**



ACCESSORIES X 8 dp

Wall Mount



with tilt unit, max. load 40 kg
Order No. **08130**

Wall Mount



for U-brackets, max. load 40 kg,
incl. (M10 x 70 mm socket head screw,
M10 hex lock nut and flat washer)
for 8"-12" speakers
Order No. **08130/F/269/w** (RAL 9010)
Order No. **08130/F/269**

Hybrid Cable System



PowerCon-PowerCon / XLR-XLR
2,5 m Order No. **08462**
5 m Order No. **08464**
10 m Order No. **08466**
15 m Order No. **08468**

Cover



for X 8,
padded
Order No. **01225/X8**

Rain Cover



for X 8,
with zipper
Order No. **01225/X8/outdoor**

Flight Case



for 2 pcs. X 8 and 2 pcs. MultiRigg,
partition walls, heavy duty, 9 mm
birch multiplex, PVC coated black, 6 x
recessed sprung handles, 2 x butterfly
catches, 4 x 100 mm blue wheels (2
pcs. with brake), interior lined with felt
Size (H x W x D): 76,2 x 61,5 x 74,7 cm
Order No. **16570**



Rain Cover